

# Method of Working Plan

Perth Airport:  
 2020 Pavement Renewal -  
 Runway 06/24, Runway 03/21 and Various Taxiways

Document ID:	MOWP YPPH 002-20
Version Number:	Final Revision 3
Approval Date:	1 October 2020
Works Commencement Date:	7 October 2020
Estimated Completion Date:	12 October 2020
MOWP Expiry Date:	31 October 2020

## TABLE OF CONTENTS

<b>SECTION 1</b>	<b>WORKS INFORMATION.....</b>	<b>4</b>
1.1	Scope of works .....	4
1.2	Execution of Works Timings .....	4
1.3	Sequence of works by Stages .....	5
<b>SECTION 2</b>	<b>RESTRICTIONS TO AIRCRAFT OPERATIONS .....</b>	<b>5</b>
2.1	Restrictions by stage .....	5
2.2	NOTAMS.....	7
2.3	Aircraft Emergencies .....	8
2.4	Airport Emergencies .....	8
	2.4.1 Aviation Rescue & Fire Fighting Service (ARFFS).....	8
2.5	Adverse Weather & Low Visibility Operations.....	8
2.6	Engine Ground Runs .....	8
<b>SECTION 3</b>	<b>PERSONNEL AND EQUIPMENT .....</b>	<b>9</b>
3.1	Access.....	9
3.2	Foreign Object Debris.....	9
3.3	Jet Blast .....	9
3.4	Vehicle/Equipment Condition.....	10
3.5	Vehicle & Personnel Separation .....	10
3.6	Obstacle Management .....	10
3.7	Vehicle Critical Areas.....	10
3.8	Security and Emergency .....	10
3.9	Works Safety Officers.....	11
	3.9.1 Airfield Duty Manager’s Responsibilities .....	11
	3.9.2 Works Safety Officer’s Responsibilities .....	11
<b>SECTION 4</b>	<b>AERODROME MARKERS, MARKINGS AND LIGHTS.....</b>	<b>12</b>
4.1	Markers.....	12
	4.1.1 Unserviceability Markers .....	12
	4.1.2 Works Limit Markers .....	12
4.2	Markings .....	12
4.3	Lights .....	12
4.4	Protection of electrical services .....	12

SECTION 5 SPECIAL REQUIREMENTS ..... 12

SECTION 6 ADMINISTRATION ..... 13

6.1 Works Organisation ..... 13

    6.1.1 Contractor’s Site Representative..... 13

6.2 Perth Airport Project Manager ..... 13

6.3 MOWP Development and Execution ..... 13

SECTION 7 AUTHORITY ..... 14

7.1 Expiry of the MOWP ..... 14

7.2 Agreement ..... 14

7.3 Approval..... 14

SECTION 8 DRAWINGS ..... 14

SECTION 9 DISTRIBUTION LIST ..... 15

APPENDIX A REVISION HISTORY ..... 16

## SECTION 1 WORKS INFORMATION

This Method of Working Plan Revision 3 is issued to complete the 2020 Pavement Renewal Program.

Whilst the majority of works have been completed, there is works relating to surface rejuvenation and blast pavement sealing that remain outstanding due to the impact of the winter weather over the previous programme.

Restrictions, NOTAM's and drawings relating to completed stages have been removed.

### 1.1 Scope of works

The remaining works will comprise of:

- Surface rejuvenation treatment to existing asphalt surface
- Line marking
- Application of crumbed rubber seal to existing blast pavements

The following aerodrome facilities will be affected by the works:

- Taxiway Whiskey
- Taxiway Charlie & Charlie 6
- Link 4, 5, 6 & 7
- Taxiway Papa & Tango Lane

### 1.2 Execution of Works Timings

Works are scheduled to commence from Wednesday 7<sup>th</sup> October 2020 with an expected completion of 12<sup>th</sup> October 2020.

Works areas will be closed from 2330 to 0900 UTC and reopened daily.

### 1.3 Sequence of works by Stages

Below are the dates and timings of each stage. The program consists of up to 2 concurrent works locations and include contingency days for incomplete preceding stages. Due to equipment availability works will be complete by 14 October and rescheduled for 2021.

Wed	7 - Oct	Stage 9	Surface Rejuvenation
Thu	8 - Oct	Stage 8	Surface Rejuvenation
Fri	9 - Oct	Stage 7	Surface Rejuvenation & Blast Protection
Sat	10 - Oct	Contingency day	
Sun	11 - Oct	Contingency day	
Mon	12 - Oct	Stage 6 & 5	Surface Rejuvenation
Tue	13 - Oct	Contingency day	
Wed	14 - Oct	Contingency day	

The actual date and time of commencement will be advised by a NOTAM, to be issued not less than 48 hours before work commences and not less than 24 hours before a change of stage.

#### Stage Update Notifications

Stage Update Notifications will not be issued for this remaining works. Refer to published NOTAMs.

## SECTION 2 RESTRICTIONS TO AIRCRAFT OPERATIONS

### 2.1 Restrictions by stage

<b>Stage 5</b>	Taxiway C/P & Tango Lane
<b>Works description</b>	Surface Rejuvenation of intersection of Twy C/P & Tango Lane
<b>Estimated duration</b>	1 working day (combined with Stage 6)
<b>Restrictions</b>	
<b>Runways</b>	Nil
<b>Taxiways</b>	Twy C between Link 4 & Rwy 06/24 not available Twy P not available Tango Lane between T1 Domestic Bay 148 and Twy C not available
<b>Aprons/Bays</b>	Bay 148 pushback and tow forward to behind Bay 150 prior to engine start procedure Bay 149 pushback and tow forward to behind Bay 151 prior to engine start procedure
<b>NOTAM Ref N<sup>os</sup></b>	Stage 5

<b>Stage 6</b>	Taxiway Charlie
Works description	Surface Rejuvenation between Twy P and Link 5
Estimated duration	1 working day (combined with Stage 5)
<b>Restrictions</b>	
Runways	Nil
Taxiways	Twy C between Twy P & Link 5 not available. Link 4 access to Twy C not available
Aprons/Bays	Bay 147 not available to A330 type Bay 147A/B pushback and tow forward to behind Bay 145 prior to engine start procedure Bay 250A not available Bay 250 pushback and tow forward to behind Bay 145 prior to engine start procedure
NOTAM Ref N <sup>os</sup>	Stage 6

<b>Stage 7</b>	Taxiway Charlie
Works description	Surface Rejuvenation & Blast Protection between Link 4 and Link 6
Estimated duration	1 working day
<b>Restrictions</b>	
Runways	Nil
Taxiways	Twy C between Link 4 & Link 6 not available. Link 5 access to Twy C not available
Aprons/Bays	Bay 209 & 255 push back and tow forward to behind bay 207 prior to engine start procedure
NOTAM Ref N <sup>os</sup>	Stage 7

<b>Stage 8</b>	Intersection Taxiway Charlie and Charlie 6
Works description	Surface Rejuvenation of Twy C & C6
Estimated duration	1 working day
<b>Restrictions</b>	
Runways	Nil
Taxiways	Twy C between Link 5 and Link 7 not available. Twy C6 not available. Link 6 access to Twy C not available
Aprons/Bays	Bay 210 & 260 pushback and tow forward to behind Bay 212 prior to engine start procedure
NOTAM Ref N <sup>os</sup>	Stage 8

<b>Stage 9</b>	Taxiway Charlie
Works description	Surface Rejuvenation between Twy C6 and C9
Estimated duration	1 working day
<b>Restrictions</b>	
Runways	Nil
Taxiways	Twy C south of Twy C6/Link 6 not available Twy C9 & C11 not available Link 7 access to Twy C not available
Aprons/Bays	Bay 269 pushback and tow forward to behind Bay 267 prior to engine start procedure
NOTAM Ref N <sup>os</sup>	Stage 9

<b>All Stages</b>	
<b>A380 Taxi Routes</b>	The alternate A380 taxi routes will be available during stages where Taxiway Charlie is unserviceable. Refer to published ERSA A380 Taxi Route Map.
<b>Taxi Routes</b>	Preferred runway exits and inbound/outbound taxi routes may not be available and will be advised by ATC.
<b>Low Visibility Operations</b>	Due to closures of standard LVO taxiways operators should expect delays and extended taxi during declared Low Visibility Operations.

## 2.2 NOTAMS

*All times are in UTC unless stated otherwise.*

### STAGE 5

- B) YYMMDD
- C) YYMMDD
- D)
- E) TWY P NOT AVBL  
TWY C BTN RWY 06/24 AND LINK 4 NOT AVBL  
REF METHOD OF WORKING PLAN YPPH 002-20 STAGE 5

### STAGE 6

- B) YYMMDD
- C) YYMMDD
- D)
- E) TWY C BTN TWY P AND LINK 5 NOT AVBL  
REF METHOD OF WORKING PLAN YPPH 002-20 STAGE 6

### STAGE 7

- B) YYMMDD
- C) YYMMDD
- D)
- E) TWY C BTN LINK 4 AND LINK 6 NOT AVBL  
REF METHOD OF WORKING PLAN YPPH 002-20 STAGE 7

### STAGE 8

- B) YYMMDD
- C) YYMMDD
- D)
- E) TWY C6 NOT AVBL  
TWY C BTN LINK 5 AND LINK 7 NOT AVBL  
REF METHOD OF WORKING PLAN YPPH 002-20 STAGE 8

STAGE 9

- B) YYMMDD
- C) YYMMDD
- D)
- E) TWY C STH OF TWY C6 NOT AVBL  
TWY C9 NOT AVBL  
TWY C11 NOT AVBL  
REF METHOD OF WORKING PLAN YPPH 002-20 STAGE 9

## 2.3 Aircraft Emergencies

Taxiways will normally not be made available for declared aircraft emergencies. Refer to section 2.4.

## 2.4 Airport Emergencies

If an incident should occur at Perth Airport and emergency procedures are activated as detailed in the Perth Airport Aerodrome Emergency Plan, based on the size and scale of the incident, works may be suspended or ceased for that shift.

The Airfield Duty Manager is responsible for communicating suspensions or cessations to the works party during an emergency.

### 2.4.1 Aviation Rescue & Fire Fighting Service (ARFFS)

Due to the nature of the works (which includes wet pavement seal) **ARFFS vehicles will NOT be permitted through the closed works areas and** should request routing from ATC that avoids active works areas.

During the closures on Twy C access to Rwy standby positions on Twy C9 will be restricted.

When responding to an incident in or near an active work site **ARFFS vehicles shall be limited to a maximum speed of 40km/h.**

## 2.5 Adverse Weather & Low Visibility Operations

Adverse weather such as very heavy showers, storms or fog may result in a cancelled works shift. Perth Airport, ATC and the Contractor will consult as a group prior to each shift to determine if the weather forecast is not suitable for works to commence.

Should adverse weather such as very heavy showers, storms or fog generate after works have begun Perth Airport, ATC and the Contractor will consult as a group to determine if the weather event requires a suspension.

During declared Low Visibility Operations all works shall be ceased.

## 2.6 Engine Ground Runs

During periods the Twy W Engine Ground Run (EGR) area will not be available. As such an alternative area south of Twy C9 on Twy C, or during some stages Twy A south of Twy A9 can be made available. Operators should be



aware that there may be delays or restricted times for EGRs. In all cases permission for EGR must be gained from the on duty Airfield Duty Manager.

## SECTION 3 PERSONNEL AND EQUIPMENT

The following restrictions apply to personnel and equipment undertaking the works. Regarding aircraft safety and airport security, this MOWP will take precedence over other contract documents that may be in place for any person to carry out works at the Airport.

All personnel associated with the work shall be bound by the instructions issued by the Works Safety Officer (WSO). All Contractors or Sub-Contractors must be directly supervised by a Works Safety Officer. Works will be confined to the areas shown on the drawings.

### 3.1 Access

Access routes to each site are via the marked apron road ways or existing tracks as identified in the drawings. Access to or across active areas of the manoeuvring area shall be under escort of a Works Safety Officer with the appropriate driving authority.

The Contractor will observe the Limit of Works markers and remain within the defined area as detailed in the stage drawings.

### 3.2 Foreign Object Debris

Foreign Object Debris (FOD) is any item (from small stones to equipment) on the manoeuvring area that is not intended to be there. FOD is a significant hazard to aircraft operations.

The Contractors must leave the works area in an acceptable operational condition to the full satisfaction of the WSO prior to the completion of the work period. This is an essential safety requirement which must be achieved within the prescribed time periods for each stage to ensure minimal disruption to airfield operations.

The Contractors shall be responsible for the cleanliness of the work areas together with its access routes for the duration of the works. All loose material and equipment must be secured against movement in strong wind or by aircraft jet blast. The occurrence of dust, debris and loose foreign materials is to be minimised to the satisfaction of the WSO. The Contractors shall employ continuous approved methods of dust suppression and debris removal throughout the duration of the works and at other times when directed by the WSO.

Vehicles transporting materials to or from the site shall, prior to movement, be cleaned in all areas where materials may lodge including body rails, wheels, wheel arches, tailgates and rear fittings to the full satisfaction of the WSO.

### 3.3 Jet Blast

Jet Blast is the exhaust (thrust) from aircraft engines which, for a Boeing 777, can reach a velocity of 400kph.

Works sites have been assessed for potential exposure to jet blast.

Works Location	Jet Blast
All	All stages have some potential for jet blast

On all works sites, jet blast remains a constant hazard at Perth Airport and all works personnel should use caution when working close to operational runways and taxiways or behind aircraft.

Light materials, tools and equipment must be secured always when not in use (or where possible, when in use) if there is a risk of exposure to jet blast.

### 3.4 Vehicle/Equipment Condition

All vehicles and plant shall be in full working condition to ensure full mobility around the work areas as required. Unserviceable or mechanically unsound vehicles and plant shall be removed from the work area as directed by the Works Safety Officer or the Project Manager and shall be replaced by fully serviceable plant.

All vehicles and plant must have a flashing amber beacon. WSO vehicles must have both air band radios and VELO as required by the Airside Vehicle Control Handbook.

### 3.5 Vehicle & Personnel Separation

Works supervisors shall plan works to eliminate, or minimise as far as practicable, the interaction between vehicles and personnel on foot. Separation is especially important during lighting works when personnel are crouched to work.

### 3.6 Obstacle Management

Vehicles plant and equipment must remain below the Obstacle Limitation Surface and are restricted to a height of 8m for all works locations. Operations above 8m will require specific written approval from the Works Safety Officer. This approval is normally provided by the issuing of a Crane Permit via the Perth Airport – Protected Airspace Assessment Tool (PAAT) available via the following link <https://paat.perthairport.com.au>

Crane Permits do not constitute an approval for the operation itself; it is a permit to operate at a nominated height above ground. The Contractor is to ensure any other approval required under the Construction Safety Management Plan for the operation is obtained.

### 3.7 Vehicle Critical Areas

Vehicle Critical Areas (VCA) are protected areas around air navigation equipment. No works are planned to take place within an active VCA and as a result all vehicles will remain clear of critical areas.

### 3.8 Security and Emergency

All personnel entering the work site must display either a current ASIC or a Visitor Identification Card. These cards or passes must be displayed always. The Contractor's Superintendents will be responsible for the employees, subcontractors and personnel under their control.

The Works Safety Officer may refuse access to persons who in their opinion are likely to present a safety risk to airfield operations.

#### Communicating Incidents to Perth Airport

The contractor is responsible for ensuring that Emergency Incidents are reported to **Perth Airport ACC on 9478 8500**. This includes fires or hazards. Upon notification to ACC the WSO supervising the works site must be notified.

**All life-threatening incidents must be reported to Emergency Services on 000.**

### 3.9 Works Safety Officers

The WSOs for these works will be contracted WSOs overseen by the Airfield Duty Managers.

#### 3.9.1 Airfield Duty Manager's Responsibilities

The Airfield Duty Manager's responsibilities include, but are not limited to the following;

- Attend the works organisations daily shift briefing;
- Ensure the safety of aircraft operations in accordance with the standards for aerodrome works and this MOWP;
- Ensure that, where applicable, the aerodrome works are notified by issue of a NOTAM and that the text of each NOTAM is exactly as set out in this MOWP;
- Supply the ATC Shift Manager, daily, with whatever information is necessary to ensure the safety of aircraft operations;
- Ensure that the movement area is safe for normal aircraft operations following removal of vehicles, plant, equipment, personnel and FOD from the works area;

#### 3.9.2 Works Safety Officer's Responsibilities

The Works Safety Officer's responsibilities include, but are not limited to the following;

- Attend both the PAPL Airfield Operations shift briefing and the works organisations daily shift briefing.
- Ensure the safety of aircraft operations in accordance with the standards for aerodrome works and this MOWP;
- Check, daily, that the text of any NOTAM associated with the works is exactly as set out in this MOWP or its amendments;
- Supply the ATC Shift Manager, as required, with whatever information is necessary to ensure the safety of aircraft operations;
- Discuss with the works organisation, daily, any matters necessary to ensure the safety of aircraft operations;
- Ensure that unserviceable portions of the movement area, temporary obstructions, and the limits of the works area are correctly marked and lit in accordance with MOS Part 139 Paragraph 10.10.8, and this MOWP;
- Ensure that the vehicles, plant and equipment carrying out aerodrome works are properly marked and lit or are under works safety officer supervision or within properly marked and lit works area;
- Ensure that all other requirements of the directions and MOWP relating to vehicles, plant, equipment and materials are complied with;
- Ensure that access routes to work areas are in accordance with the applicable MOWP and clearly identified and that access is restricted to these routes;
- Report immediately to the air-traffic controller and the ADM any incident, or damage to facilities, likely to affect air-traffic control services or the safety of aircraft;
- Remain on duty at the works area while workers are onsite and the aerodrome is open to aircraft operations;
- Ensure that ATC is kept informed of the radio call signs of the vehicles used by the works safety officer;
- Require the immediate removal of vehicles, plant and personnel from the movement area where necessary to ensure the safety of aircraft operations;
- Ensure that the movement area is safe for normal aircraft operations following removal of vehicles, plant, equipment, personnel and FOD from the works area.

## SECTION 4 AERODROME MARKERS, MARKINGS AND LIGHTS

### 4.1 Markers

#### 4.1.1 Unserviceability Markers

During the works the closed portions of the manoeuvring area will be marked by red and white unserviceability markers during the day, and red lights at night, in accordance with the *Manual of Standards (MOS) - Part 139 Aerodromes*.

#### 4.1.2 Works Limit Markers

The works area will be marked by works limit lines (as orange cones 'witches hats'). Pull back limits will be identified by blue cones. On large stages works limit markers may only be used at active intersections to delineate the works limit.

### 4.2 Markings

Where markings are removed during the works they must be reinstated prior to commissioning inspections. Areas of the movement area will not be reopened without line markings being reinstated.

### 4.3 Lights

All lighting within and directly leading into the closed movement area will be extinguished either by electrical isolation or by physical mean (covering or blanking). Lighting will be reinstated by the end of each stage.

### 4.4 Protection of electrical services

Perth Airport Pty Ltd has an Excavation Permit Procedure (EPP) which ensures pre-planning is undertaken to manage all risks associated with excavation and it is critical that the EPP is followed prior to any excavation proceeding. The EPP includes specific more extensive pre-planning procedures for High Risk Excavation.

## SECTION 5 SPECIAL REQUIREMENTS

There are no additional special requirements associated with these works.

## SECTION 6 ADMINISTRATION

### 6.1 Works Organisation

Perth Airport has contracted West Coast Civil to undertake the works.

#### 6.1.1 Contractor's Site Representative

The Contractor's Site Representative shall remain responsible on behalf of the works organisation for complying with the requirements of this MOWP. Contact details of the Contractor's Site Representative are:

Contractor Works Manager – West Coast Civil  
**Ryan Oliver**  
 0423 725 199

### 6.2 Perth Airport Project Manager

The Perth Airport Manager for this Project is:

Projects Manager – Perth Airport Pty Ltd  
**Don Bridges**  
 (08) 9478 8498  
[Don.Bridges@perthairport.com.au](mailto:Don.Bridges@perthairport.com.au)

### 6.3 MOWP Development and Execution

The Airfield Operations Team are responsible for the development and execution of the MOWP. Questions related to the MOWP or execution of works may be directed to;

Aviation Safety Manager: *(Responsible for day to day operations.)*  
**Darren McKenzie**  
 (08) 9478 8441  
[darren.mckenzie@perthairport.com.au](mailto:darren.mckenzie@perthairport.com.au)

After Hours: **Airfield Duty Manager**  
 (08) 9478 8424  
 0419 195 790

General Manager Operations: *(Overall responsibility for airside safety.)*  
**Tony Sewell**  
 (08) 9478 8879  
[Tony.Sewell@perthairport.com.au](mailto:Tony.Sewell@perthairport.com.au)

## SECTION 7 AUTHORITY


All works will be carried out in accordance with the MOWP. The MOWP conforms to the provisions of the Civil Aviation Act 1988 and Regulation 139.245 of the Civil Aviation Safety Regulations (Part 139) for the Safe Planning and Conduct of Aerodrome Works.

### 7.1 Expiry of the MOWP

This MOWP will remain current until **31 October 2020** unless extended by amendment.

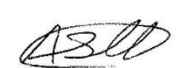
### 7.2 Agreement

The following signatories recognise the provisions and restrictions in this MOWP and agree to execute the works in accordance to those provisions and restrictions.

<b>Contractor's Site Manager</b> Ryan Oliver West Coast Civil		Date 30 September 2020
<b>Project Manger</b> Don Bridges	Sign 	Date 30 September 2020

### 7.3 Approval

Under the authority of the Perth Airport General Manager Airfield Operations **MOWP YPPH 002-20** is approved for release.

<b>Tony Sewell</b> General Manager Operations Perth Airport Pty Ltd	Sign 	Date 1 October 2020
---	---	------------------------

## SECTION 8 DRAWINGS

The drawings associated with MOWP YPPH 002-20 are attached to this Method of Working Plan.

## SECTION 9 DISTRIBUTION LIST

This MOWP will be distributed to those organisations and agencies listed below.

### Essential Contacts:

Air Asia  
 Air Asia X  
 Air BP  
 Air Mauritius  
 Air New Zealand  
 Air North  
 Airservices Australia  
 Cathay Pacific  
 Citilink  
 China Eastern Airlines  
 Cobham Aviation (SAR Services)  
 Emirates  
 Garuda Indonesia  
 Jetstar  
 Navblue Systems Support Inc  
 Perth Airport Pty Ltd  
 Phillippine Airlines  
 Qantas  
 Qatar Airways  
 Remorex (Acequity)  
 Royal Flying Doctors(RFDS)  
 Scoot Airlines  
 Singapore Airlines  
 South African Airways  
 Thai Airways  
 Tiger Airways (Aust)  
 VARA  
 Virgin Australia Airlines  
 Weston Aviation

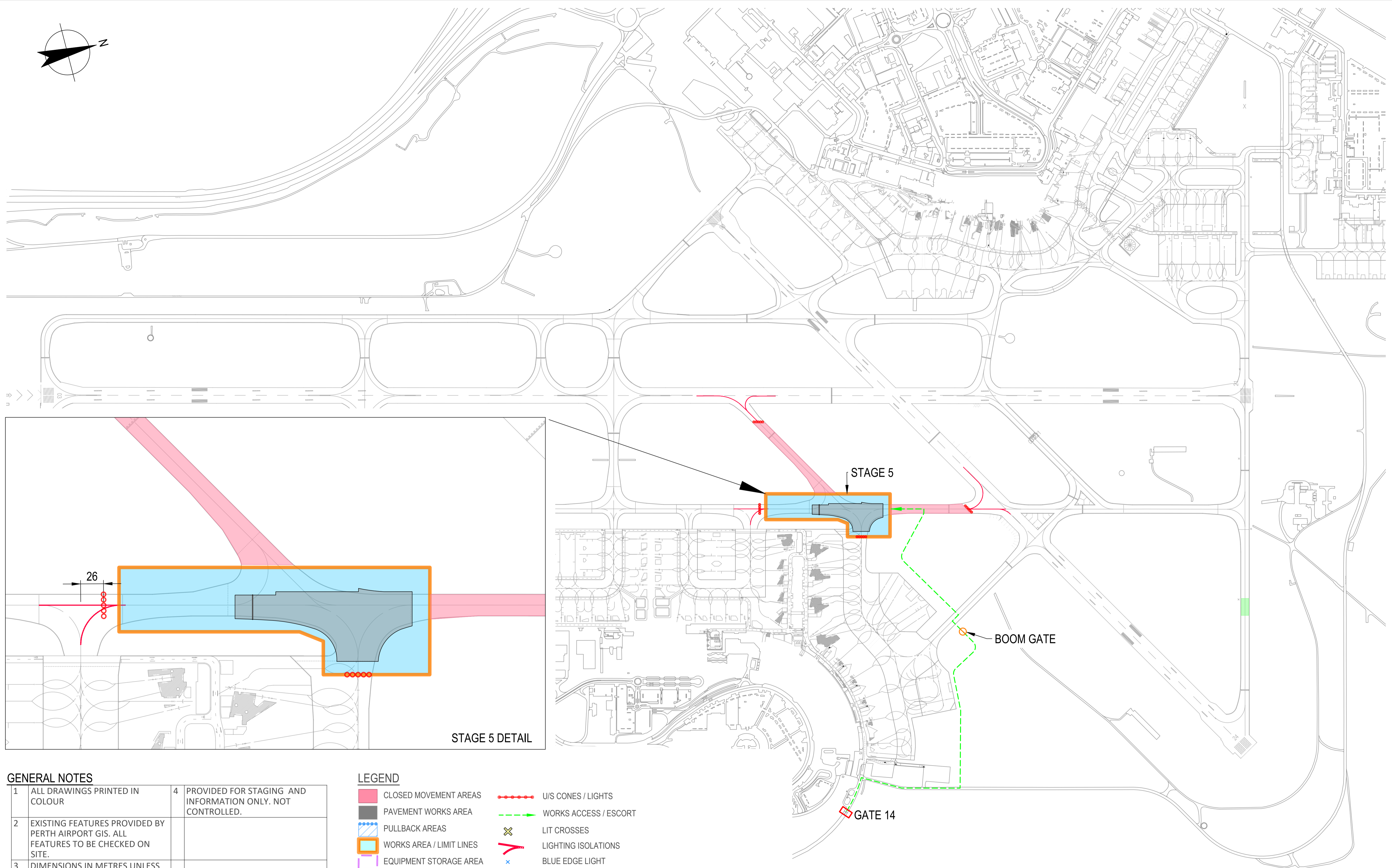
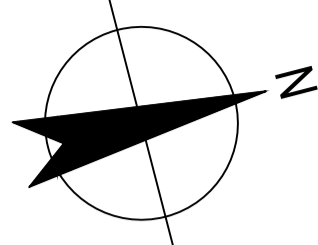
### Information Contacts:

Aeroadapt  
 Air Asia  
 Air Mauritius  
 Air New Zealand  
 Airservices Australia  
 Airwork Flight Operations  
 All Nippon Airways  
 Aviation Performance Systems  
 Central Air  
 China Eastern  
 China Southern WA Flying Collage  
 Cobham Aviation  
 Densford Civil  
 Dnata  
 Garuda Indonesia  
 Jeppesen  
 Jetstar  
 Perth Airport Pty Ltd  
 Qantas Airways  
 Qantas Freight  
 QantasLink  
 Royal Aero Club of Western  
 Australia  
 Scoot Airlines  
 Singapore Air Cargo  
 Singapore Airlines  
 South African Airways Cargo  
 Tiger Airways (Australia)  
 VARA  
 Virgin Australia Airlines

## APPENDIX A REVISION HISTORY

Version	Date	Chapter/Paragraph	Details	Author	Approved by
Draft 1	19/12/19		New Draft	CF	TS
Final	07/02/20		Final Version Revision 1	CF	TS
Final	24/04/20		Final Version Revision 2 Amended order of working stages	CF	TS
Final	1/10/20		Final Version Revision 3 Removed completed stages Reduced scope of works to rejuvenation and blast protection	DM	TS





**GENERAL NOTES**

1	ALL DRAWINGS PRINTED IN COLOUR	4	PROVIDED FOR STAGING AND INFORMATION ONLY. NOT CONTROLLED.
2	EXISTING FEATURES PROVIDED BY PERTH AIRPORT GIS. ALL FEATURES TO BE CHECKED ON SITE.		
3	DIMENSIONS IN METRES UNLESS NOTED OTHERWISE.		

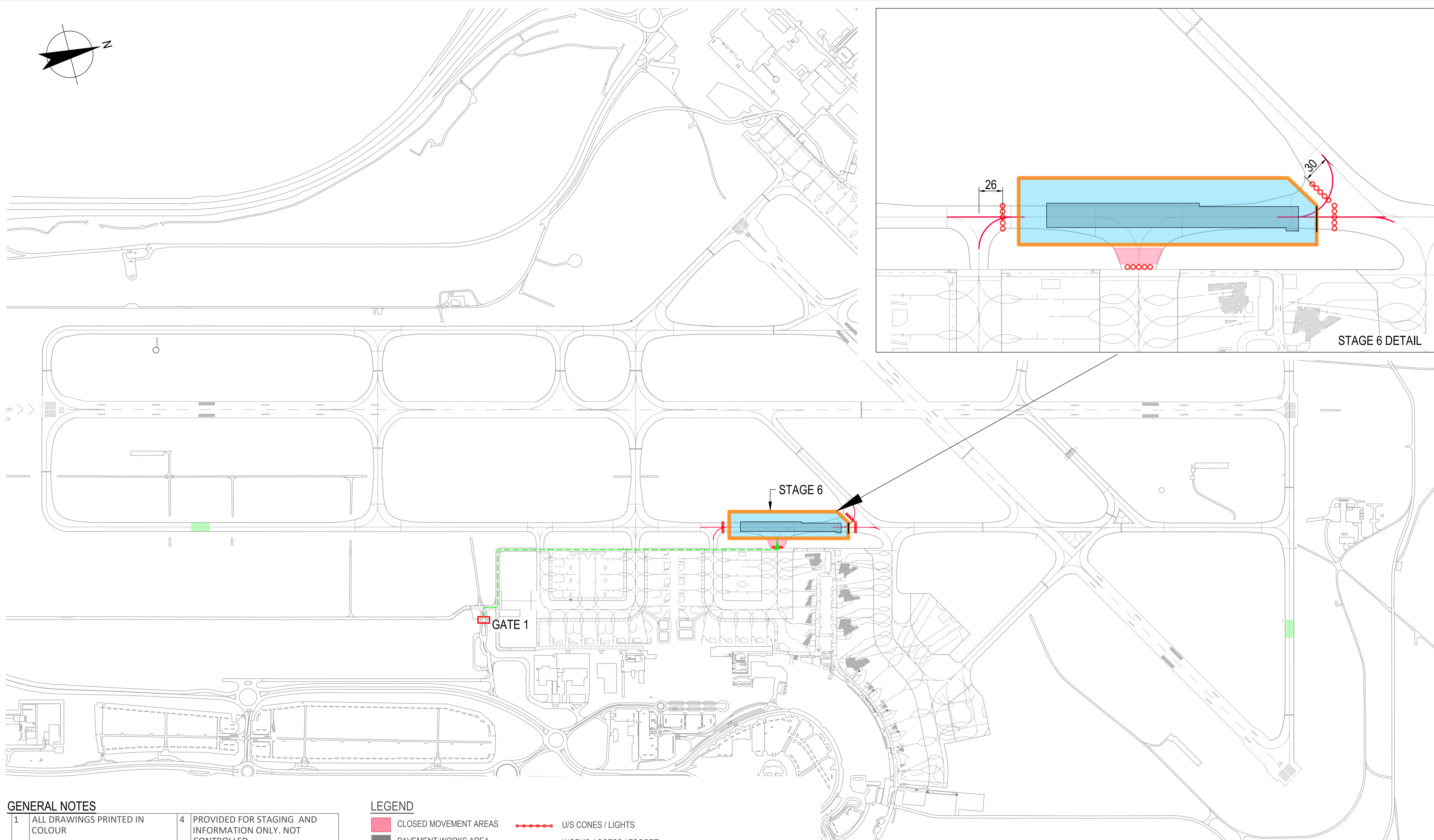
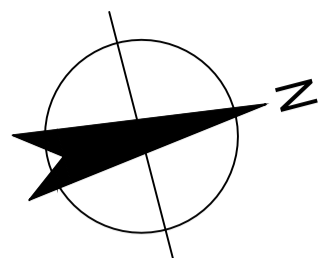
**LEGEND**

	CLOSED MOVEMENT AREAS		U/S CONES / LIGHTS
	PAVEMENT WORKS AREA		WORKS ACCESS / ESCORT
	PULLBACK AREAS		LIT CROSSES
	WORKS AREA / LIMIT LINES		LIGHTING ISOLATIONS
	EQUIPMENT STORAGE AREA		BLUE EDGE LIGHT
	TIME LIMITED WORKS		TEMPORARY EGR LOCATION

A ISSUED FOR STAGING		VN-A	
No	Revision	Note: * indicates signatures on original issue of drawing or last revision of drawing	Date
Drawn	Job Manager	Project Director	Date



<b>DO NOT SCALE</b>	Drawn V.NUGENT-A	Designer H.MARTIN	Client <b>PERTH AIRPORT PTY LTD</b>
Conditions of Use. This document may only be used by GHD's client (and any other person who GHD has agreed can use this document) for the purpose for which it was prepared and must not be used by any other person or for any other purpose.	Drafting Check	Design Check	Project <b>FY20 PAVEMENT RENEWAL PROGRAM</b>
	Approved (Project Director)	Date	Title <b>STAGING PLAN</b>
	Scale 1:5000	This Drawing must not be used for Construction unless signed as Approved	Original Size <b>A1</b>
			Drawing No: <b>61-38505-SK-007</b>
			Rev: <b>A</b>



**GENERAL NOTES**

1	ALL DRAWINGS PRINTED IN COLOUR	4	PROVIDED FOR STAGING AND INFORMATION ONLY. NOT CONTROLLED.
2	EXISTING FEATURES PROVIDED BY PERTH AIRPORT GIS. ALL FEATURES TO BE CHECKED ON SITE.		
3	DIMENSIONS IN METRES UNLESS NOTED OTHERWISE.		

**LEGEND**

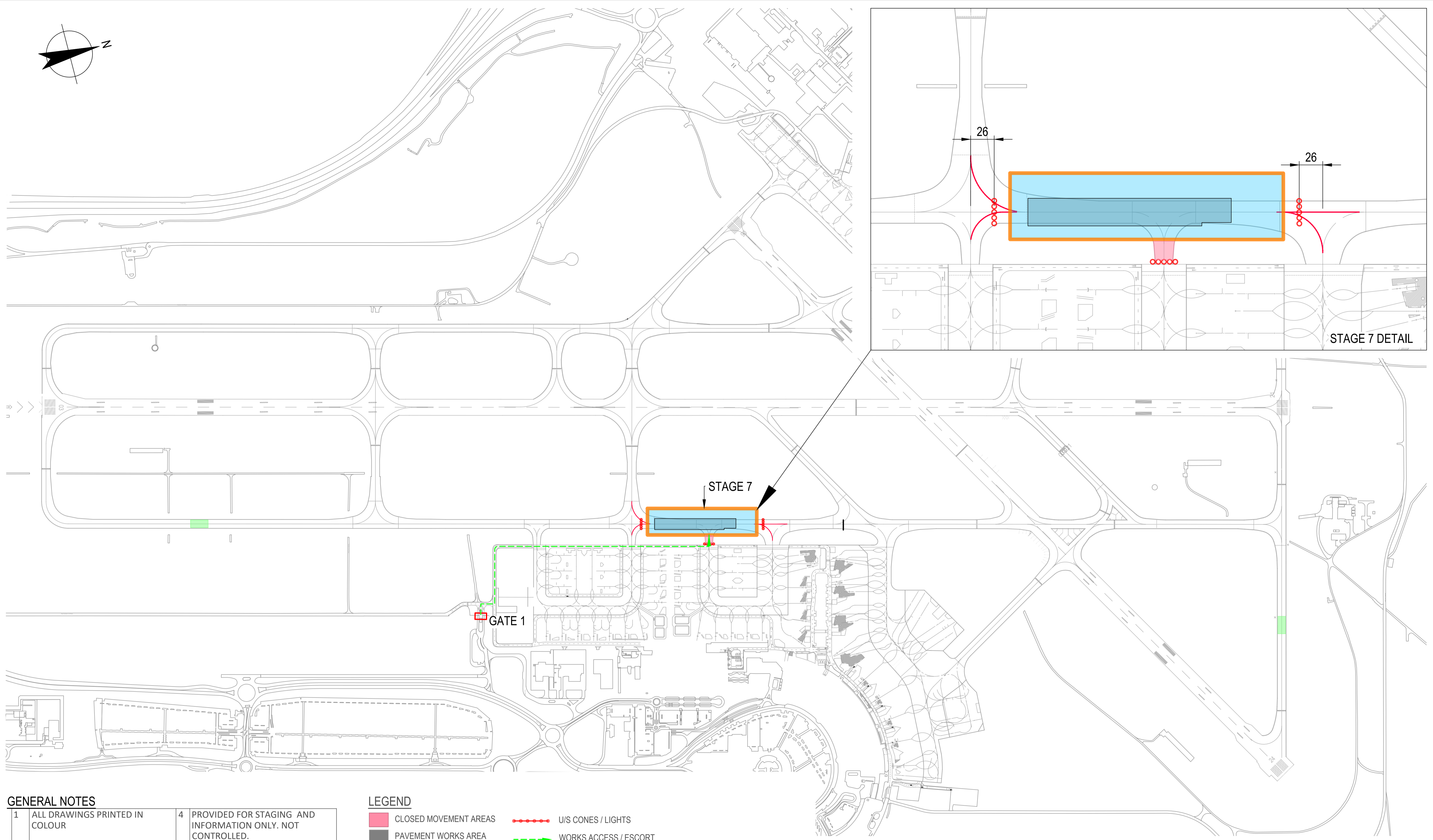
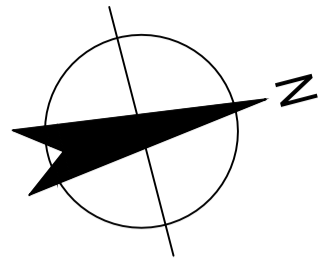
- CLOSED MOVEMENT AREAS
- PAVEMENT WORKS AREA
- PULLBACK AREAS
- WORKS AREA / LIMIT LINES
- EQUIPMENT STORAGE AREA
- TIME LIMITED WORKS
- U/S CONES / LIGHTS
- WORKS ACCESS / ESCORT
- X LIT CROSSES
- LIGHTING ISOLATIONS
- BLUE EDGE LIGHT
- TEMPORARY EGR LOCATION

A ISSUED FOR STAGING		VN-A			
No	Revision	Note: * indicates signatures on original issue of drawing or last revision of drawing	Drawn	Job Manager	Project Director



**GHD**  
 Level 10, 999 Hay Street Perth WA 6000  
 PO Box Y3106 Perth WA 6832 Australia  
 T 61 8 6222 8222 F 61 8 6222 8555  
 E permail@ghd.com.au W www.ghd.com

<b>DO NOT SCALE</b> <small>Conditions of Use. This document may only be used by GHD's client (and any other person who GHD has agreed can use this document) for the purpose for which it was prepared and must not be used by any other person or for any other purpose.</small>	Drawn V.NUGENT-A	Designer H.MARTIN	Client <b>PERTH AIRPORT PTY LTD</b>
	Drafting Check	Design Check	Project <b>FY20 PAVEMENT RENEWAL PROGRAM</b>
	Approved (Project Director) Date	Scale 1:5000	This Drawing must not be used for Construction unless signed as Approved
			Title <b>STAGING PLAN</b> <b>STAGE 6</b>
			Original Size <b>A1</b> Drawing No: <b>61-38505-SK-008</b>
			Rev: <b>A</b>



**GENERAL NOTES**

1	ALL DRAWINGS PRINTED IN COLOUR	4	PROVIDED FOR STAGING AND INFORMATION ONLY. NOT CONTROLLED.
2	EXISTING FEATURES PROVIDED BY PERTH AIRPORT GIS. ALL FEATURES TO BE CHECKED ON SITE.		
3	DIMENSIONS IN METRES UNLESS NOTED OTHERWISE.		

**LEGEND**

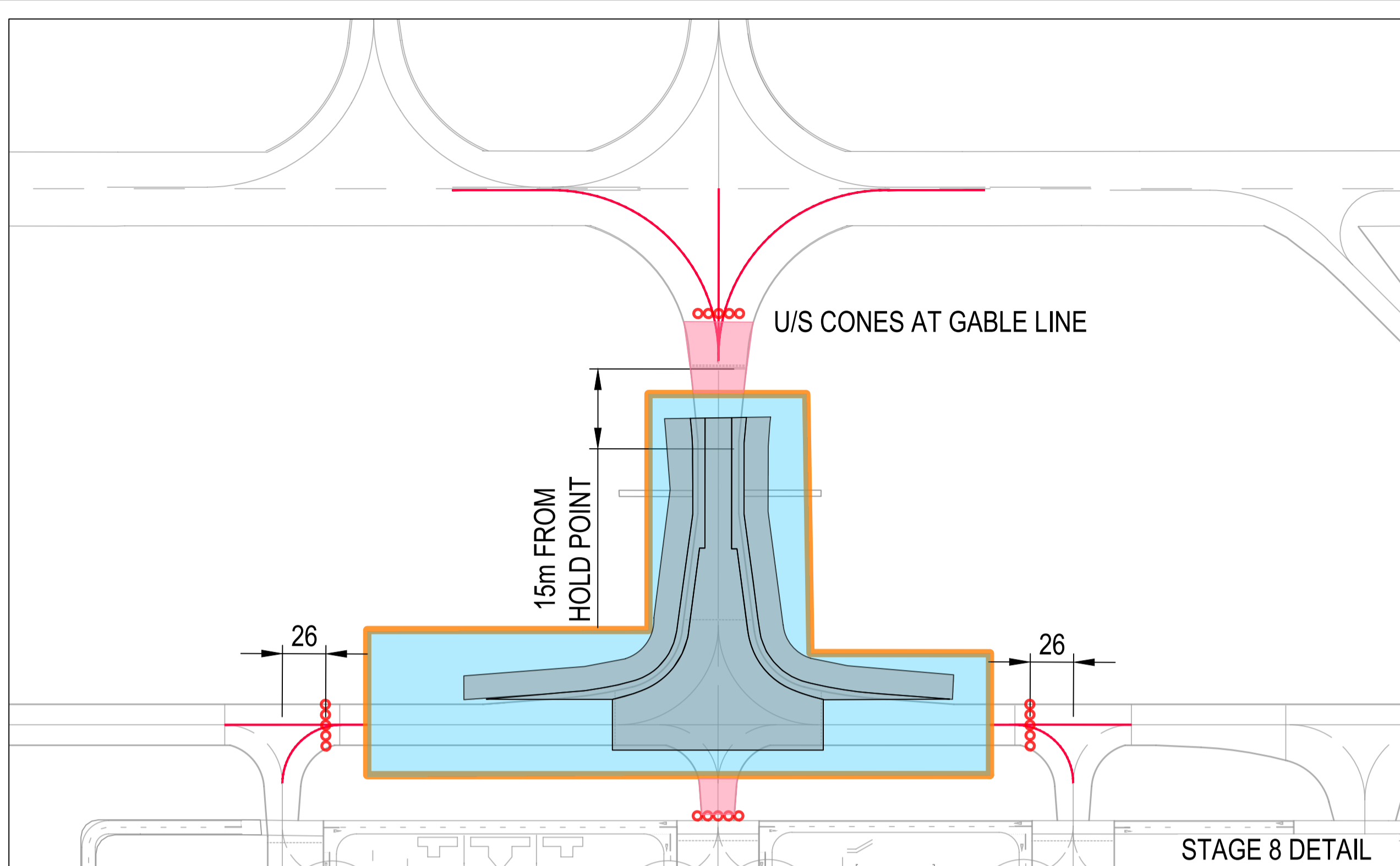
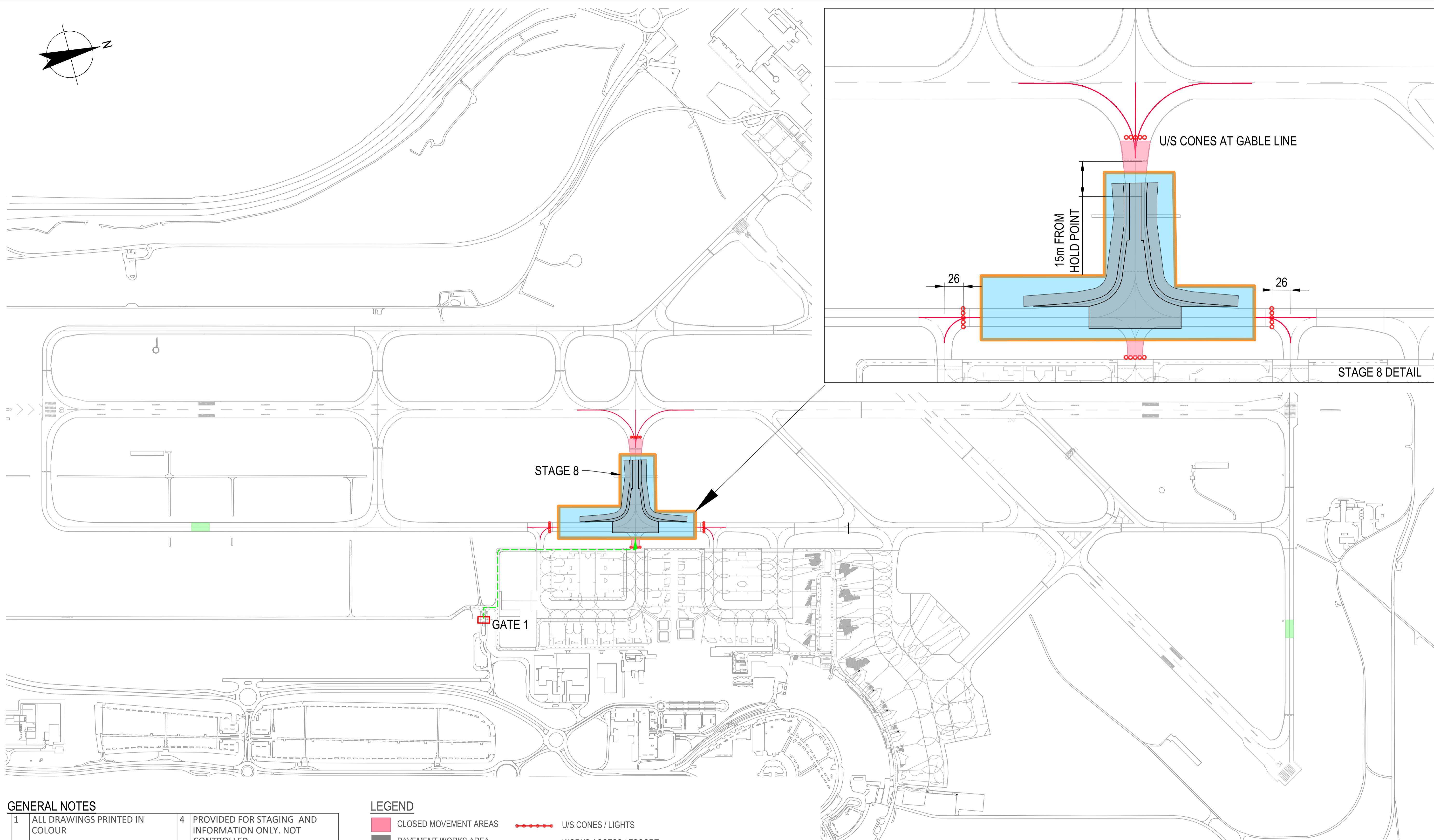
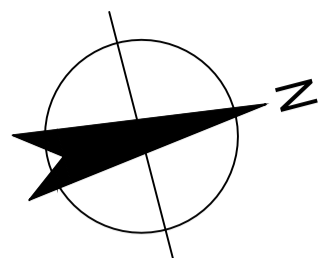
- CLOSED MOVEMENT AREAS
- PAVEMENT WORKS AREA
- PULLBACK AREAS
- WORKS AREA / LIMIT LINES
- EQUIPMENT STORAGE AREA
- TIME LIMITED WORKS
- U/S CONES / LIGHTS
- WORKS ACCESS / ESCORT
- X LIT CROSSES
- LIGHTING ISOLATIONS
- x BLUE EDGE LIGHT
- TEMPORARY EGR LOCATION

A ISSUED FOR STAGING		VN-A			
No	Revision	Note: * indicates signatures on original issue of drawing or last revision of drawing	Drawn	Job Manager	Project Director



**GHD**  
 Level 10, 999 Hay Street Perth WA 6000  
 PO Box Y3106 Perth WA 6832 Australia  
 T 61 8 6222 8222 F 61 8 6222 8555  
 E permail@ghd.com.au W www.ghd.com

<b>DO NOT SCALE</b> <small>Conditions of Use. This document may only be used by GHD's client (and any other person who GHD has agreed can use this document) for the purpose for which it was prepared and must not be used by any other person or for any other purpose.</small>	Drawn V.NUGENT-A	Designer H.MARTIN	Client <b>PERTH AIRPORT PTY LTD</b>
	Drafting Check	Design Check	Project <b>FY20 PAVEMENT RENEWAL PROGRAM</b>
	Approved (Project Director) Date	Scale 1:5000	This Drawing must not be used for Construction unless signed as Approved
			Title <b>STAGING PLAN</b> <b>STAGE 7</b>
			Original Size <b>A1</b> Drawing No: <b>61-38505-SK-009</b>
			Rev: <b>A</b>



**GENERAL NOTES**

1	ALL DRAWINGS PRINTED IN COLOUR	4	PROVIDED FOR STAGING AND INFORMATION ONLY. NOT CONTROLLED.
2	EXISTING FEATURES PROVIDED BY PERTH AIRPORT GIS. ALL FEATURES TO BE CHECKED ON SITE.		
3	DIMENSIONS IN METRES UNLESS NOTED OTHERWISE.		

**LEGEND**

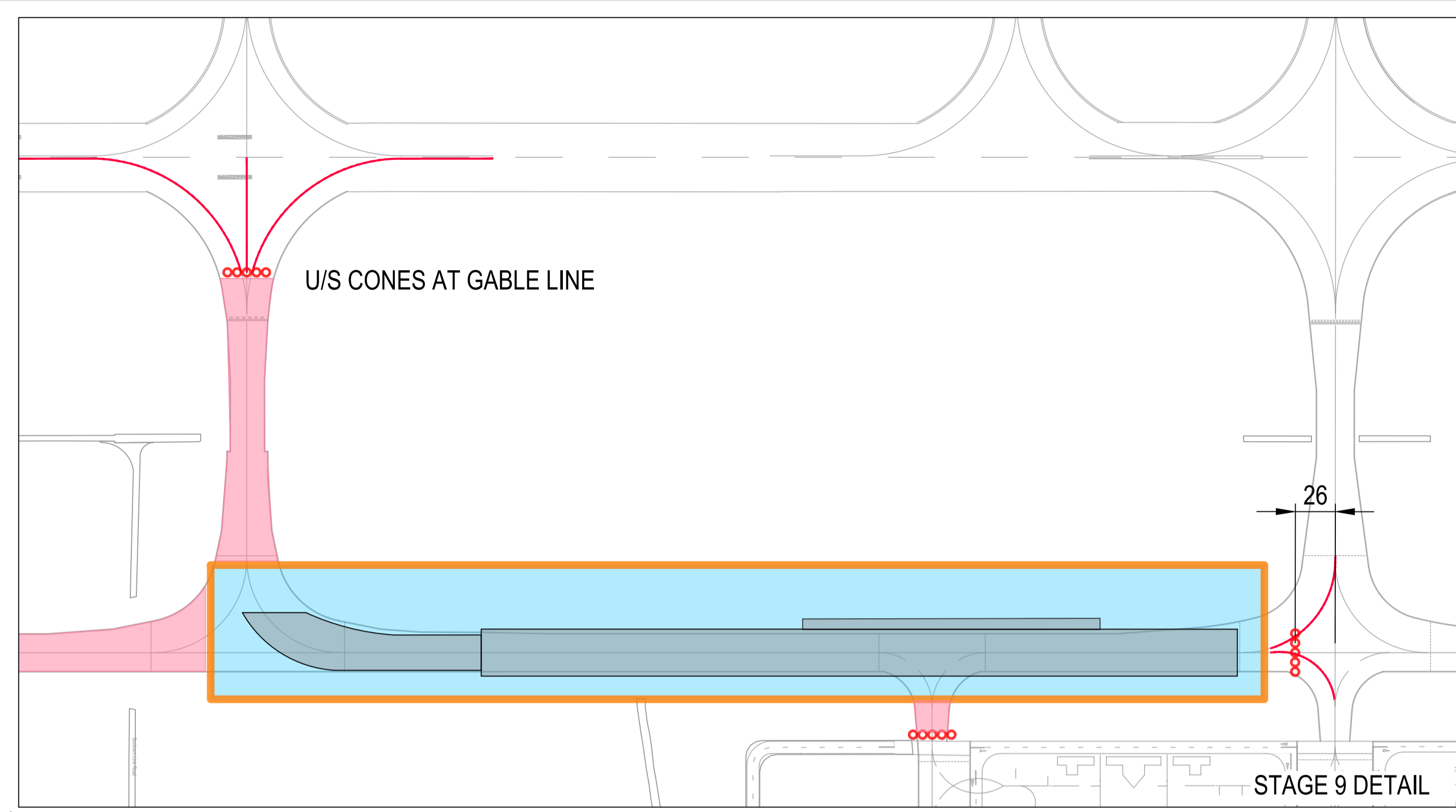
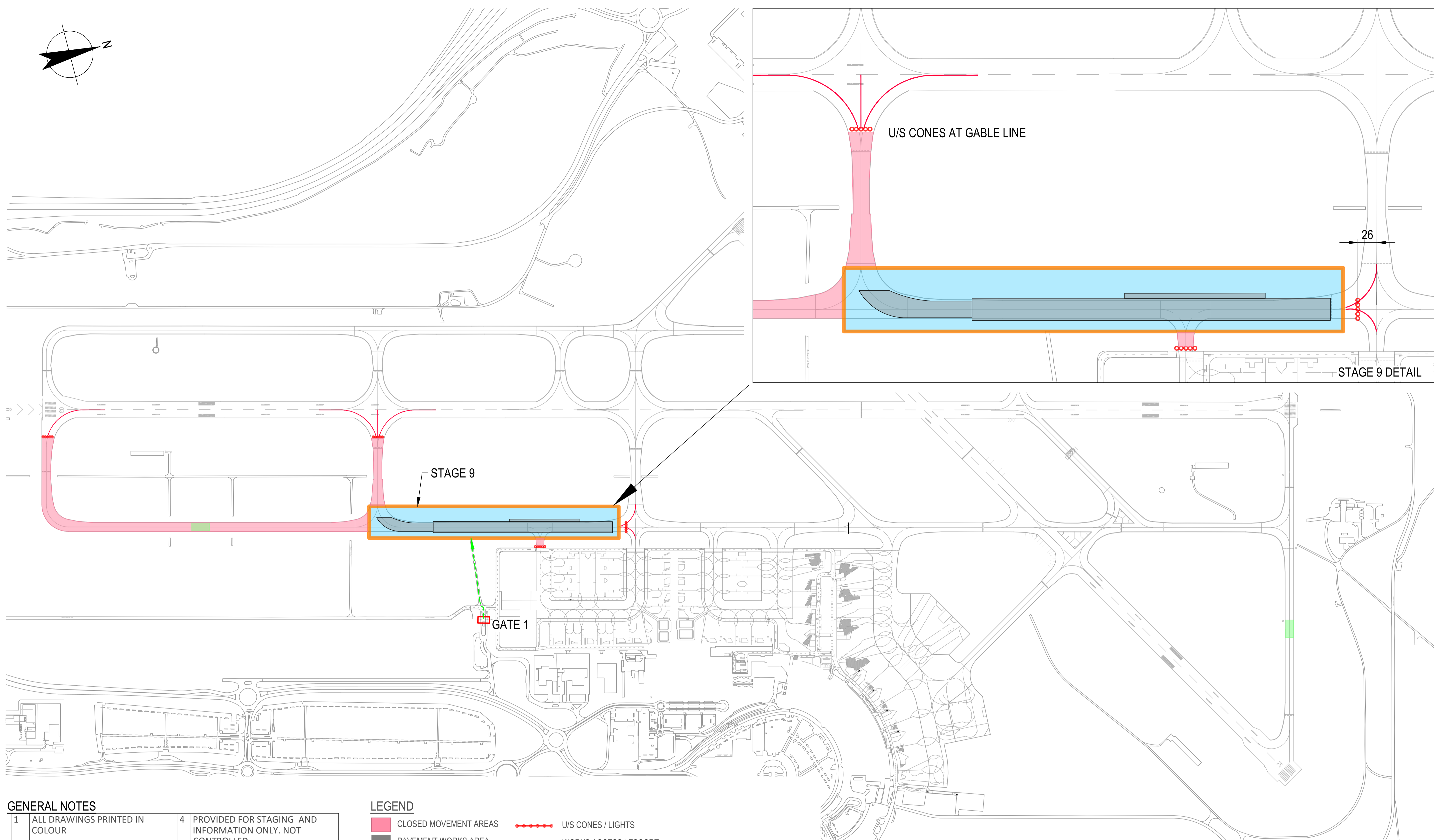
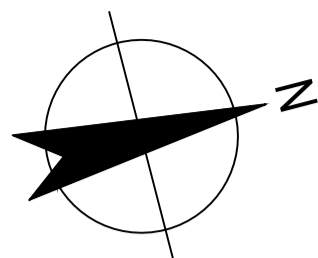
- CLOSED MOVEMENT AREAS
- PAVEMENT WORKS AREA
- PULLBACK AREAS
- WORKS AREA / LIMIT LINES
- EQUIPMENT STORAGE AREA
- TIME LIMITED WORKS
- U/S CONES / LIGHTS
- WORKS ACCESS / ESCORT
- LIT CROSSSES
- LIGHTING ISOLATIONS
- BLUE EDGE LIGHT
- TEMPORARY EGR LOCATION

A ISSUED FOR STAGING		VN-A			
No	Revision	Note: * indicates signatures on original issue of drawing or last revision of drawing	Drawn	Job Manager	Project Director



**GHD**  
 Level 10, 999 Hay Street Perth WA 6000  
 PO Box Y3106 Perth WA 6832 Australia  
 T 61 8 6222 8222 F 61 8 6222 8555  
 E permail@ghd.com.au W www.ghd.com

<b>DO NOT SCALE</b> <small>Conditions of Use. This document may only be used by GHD's client (and any other person who GHD has agreed can use this document) for the purpose for which it was prepared and must not be used by any other person or for any other purpose.</small>	Drawn V.NUGENT-A	Designer H.MARTIN	Client <b>PERTH AIRPORT PTY LTD</b> Project <b>FY20 PAVEMENT RENEWAL PROGRAM</b> Title <b>STAGING PLAN</b> <b>STAGE 8</b>	
	Drafting Check	Design Check		
	Approved (Project Director) Date	Scale 1:5000		Original Size <b>A1</b> Drawing No: <b>61-38505-SK-010</b>
	This Drawing must not be used for Construction unless signed as Approved			Rev: <b>A</b>



**GENERAL NOTES**

1	ALL DRAWINGS PRINTED IN COLOUR	4	PROVIDED FOR STAGING AND INFORMATION ONLY. NOT CONTROLLED.
2	EXISTING FEATURES PROVIDED BY PERTH AIRPORT GIS. ALL FEATURES TO BE CHECKED ON SITE.		
3	DIMENSIONS IN METRES UNLESS NOTED OTHERWISE.		

**LEGEND**

- CLOSED MOVEMENT AREAS
- PAVEMENT WORKS AREA
- PULLBACK AREAS
- WORKS AREA / LIMIT LINES
- EQUIPMENT STORAGE AREA
- TIME LIMITED WORKS
- U/S CONES / LIGHTS
- WORKS ACCESS / ESCORT
- LIT CROSSES
- LIGHTING ISOLATIONS
- BLUE EDGE LIGHT
- TEMPORARY EGR LOCATION

A ISSUED FOR STAGING		VN-A			
No	Revision	Note: * indicates signatures on original issue of drawing or last revision of drawing	Drawn	Job Manager	Project Director



**GHD**  
 Level 10, 999 Hay Street Perth WA 6000  
 PO Box Y3106 Perth WA 6832 Australia  
 T 61 8 6222 8222 F 61 8 6222 8555  
 E permail@ghd.com.au W www.ghd.com

<b>DO NOT SCALE</b> <small>Conditions of Use. This document may only be used by GHD's client (and any other person who GHD has agreed can use this document) for the purpose for which it was prepared and must not be used by any other person or for any other purpose.</small>	Drawn V.NUGENT-A	Designer H.MARTIN	Client <b>PERTH AIRPORT PTY LTD</b>
	Drafting Check	Design Check	Project <b>FY20 PAVEMENT RENEWAL PROGRAM</b>
	Approved (Project Director)	Date	Title <b>STAGING PLAN</b>
Scale 1:5000	This Drawing must not be used for Construction unless signed as Approved		Original Size <b>A1</b> Drawing No: <b>61-38505-SK-011</b> Rev: <b>A</b>