

METHOD OF WORKING PLAN

Perth Airport: Weekly Runway Maintenance - 2022

Document ID:	MOWP YPPH 001-22
Version Number:	1.0
Approval Date:	20 December 2021
Commencement Date:	7 January 2022
Completion Date:	23 December 2022
MOWP Expiry Date:	31 December 2022



TABLE OF CONTENTS

	<i>Page</i>	<i>Version</i>
<i>Table of Contents</i>	<i>ii</i>	
SECTION 2 WORKS INFORMATION	4	
2.1 Scope of works	4	
2.2 Works Timing	5	
2.3 Delayed Flights	5	
SECTION 3 RESTRICTIONS TO AIRCRAFT OPERATIONS	6	
3.1 Restrictions by Stage	6	
3.2 NOTAMS	7	
3.3 Aircraft Emergencies	9	
3.4 Airport Emergencies	9	
3.4.1 Aviation Rescue & Fire Fighting (ARFFS)	9	
3.5 Adverse Weather & Low Visibility Operations	9	
3.6 Instrument Landing Systems and Training Flights	10	
SECTION 4 PERSONNEL AND EQUIPMENT	11	
4.1 Works Access Routes	11	
4.2 Pull Back / Recall	12	
4.3 VCA Access	12	
4.4 Foreign Object Debris	12	
4.5 Jet Blast	12	
4.6 Vehicle/Equipment Condition	13	
4.7 Height Restrictions	13	
4.8 Security and Emergency	13	
4.9 Works Safety Officers	14	
4.9.1 Airfield Duty Manager's Responsibilities	14	
4.9.2 Works Safety Officer's Responsibilities	14	
SECTION 5 AERODROME MARKERS, MARKINGS AND LIGHTS	15	
5.1 Markers	15	
5.1.1 Unserviceability Markers	15	
5.1.2 Works Limit Markers	15	
5.2 Markings	15	
5.3 Lights	15	
5.3.1 Taxiway and runway lights	15	
5.3.2 Stopbars	15	

5.4 Protection of electrical services 15

SECTION 6 ADMINISTRATION 16

6.1 Works Organisation 16

6.1.1 Perth Airport Operations Teams 16

6.2 MOWP Development and Execution 16

SECTION 7 AUTHORITY 17

7.1 Expiry of the MOWP 17

7.2 Agreement 17

7.3 Approval..... 17

SECTION 8 DRAWINGS 17

SECTION 9 DISTRIBUTION LIST..... 18

SECTION 10 REVISION HISTORY..... 19

APPENDIX 1 MOWP YPPH 001-22 WORKS SCHEDULE 2022 20

SECTION 2 WORKS INFORMATION

This Method of Working Plan details the ongoing regular runway and taxiway restrictions to allow for maintenance activities. The periods of restriction have been identified in consultation with Air Traffic Control (ATC) to minimise disruptions to airlines and will be reviewed if operational demand changes.

The work comprises normal day to day maintenance activities carried out at any aerodrome and will not exceed 30 minutes to reinstate the runway to full operational status. The scope of works will be dependent on the maintenance requirements at the time; however multiple activities will be carried out.

2.1 Scope of works

For all stages the works may comprise any of the following works:

- Airfield lighting maintenance
- Line marking
- Mowing
- Detailed inspections
- Pavement Maintenance
- PAPI Maintenance
- Runway Strip Maintenance
- Minor Project works
- Instrument Landing System (ILS) testing –

As a result of the works outlined above, it is anticipated that the following facilities will be affected:

- Runway 03/21 full length,
- Runway 06/24 full length,
- Taxiways associated with the closed runway, except for identified crossing points

2.2 Works Timing

Works are scheduled every Friday and will commence at **0730hrs (WST)** and be completed by **1530hrs (WST)** of the same day.

Runway 03/21 will be closed **2 Fridays in row** and Runway 06/24 will be closed on the **third week** as per the schedule in Attachment 1.

The actual date and time of commencement will be advised by a NOTAM, to be issued not less than 48 hours before work commences.

2.3 Delayed Flights

As has been implemented in previous Runway 03/21 closures, the Airport Control Centre will monitor flights expected to require 03/21 prior to the runway being closed.

Operators are required to advise the ACC of any delayed/early flights requiring Runway 03/21 during the maintenance closure, with the expected departure or arrival time. The ACC will expect advice that the flight will either:

1. Require Runway 03/21 and why;
2. Will opt for departure off runway 06/24;
3. Will opt to delay until after the runway reopens.

PAPL will consider the impact of the delay on the works and the potential knock on impact to other flights in determining if the closure can be delayed. The ACC and Operations team will record the on-time performance of these flights and will follow up with airlines if consistently late departures begin affecting the effectiveness of maintenance activities.

SECTION 3 RESTRICTIONS TO AIRCRAFT OPERATIONS

3.1 Restrictions by Stage

Stage 1A	Runway 03/21. Works access via Taxiways A9, C9, D or N
Estimated duration	8 hours
Restrictions	
Runways	Runway 03/21 not available.
Taxiways	A south of A6, A7, A9, A11, C south of Link 7, C9, C11, P, D east of A and N not available
Aircraft Type Restrictions & Rwy Vacating Requirements	Nil

Stage 1B	Runway 03/21. Works access via Taxiways A9, C9 or W
Estimated duration	8 hours
Restrictions	
Runways	Runway 03/21 not available
Taxiways	A south of A9, A6, A7, A11, C south of C9, C6, C11, P and W between B and C not available
Aircraft Type Restrictions & Rwy Vacating Requirements	Nil

Stage 1C	Runway 03/21. Works access via Taxiways A6, C6, D or N
Estimated duration	8 hours
Restrictions	
Runways	Runway 03/21 not available
Taxiways	A south of A6, A7, A9, A11, C south of Link 7, C9, C11, P, D east of A and N not available
Aircraft Type Restrictions & Rwy Vacating Requirements	Nil

Stage 1D	Runway 03/21. Works access via Taxiways A6, C6 or W
Estimated duration	8 hours
Restrictions	
Runways	Runway 03/21 not available
Taxiways	A south of A6, A7, A9, A11, C south of Link 7, C9, C11, P and W between B and C not available
Aircraft Type Restrictions & Rwy Vacating Requirements	Nil

Stage 2A	Runway 06/24. Works access via Taxiways V or W
Estimated duration	8 hours
Restrictions	
Runways	Runway 06/24 not available
Taxiways	V and W east of C not available
Aircraft Type Restrictions & Rwy Vacating Requirements	Nil

Stage 2B	Runway 06/24. Works Access via J1, A (south) or W
Estimated duration	8 hours
Restrictions	
Runways	Runway 06/24 not available
Taxiways	A between D and V, J1 and W east of Twy C not available
Aircraft Type Restrictions & Rwy Vacating Requirements	Nil

All Stages	
Taxi Routes	Preferred inbound/outbound taxi routes may not be available and will be advised by ATC.

3.2 NOTAMS

All times are in UTC unless stated otherwise.

STAGE 1A

- A) YPPH
- B) DATE 2330 UTC
- C) DATE 0730 UTC
- E) RWY 03/21 NOT AVBL EXC FOR TWY CROSSING AND DECLARED EMERG ON 30MIN PN TO ATC
TWY A SOUTH OF A6 NOT AVBL, TWY A7, A9 AND A11 NOT AVBL, TWY C SOUTH OF LINK 7 NOT
AVBL, TWY C9 AND C11 NOT AVBL, TWY P NOT AVBL, TWY D BTN RWY 03/21 AND TWY A NOT AVBL,
TWY N NOT AVBL
REF MOWP YPPH 001-22 STAGE 1A

STAGE 1B

- A) YPPH
- B) DATE 2330 UTC
- C) DATE 0730 UTC
- E) RWY 03/21 NOT AVBL EXC FOR TWY CROSSING AND DECLARED EMERG ON 30MIN PN TO ATC
TWY A SOUTH OF A6 NOT AVBL, TWY A7, A9 AND A11 NOT AVBL, TWY C SOUTH OF LINK 7 NOT
AVBL, TWY C9 AND C11 NOT AVBL, TWY P NOT AVBL, TWY W BTN TWY B AND TWY C NOT AVBL
REF MOWP YPPH 001-22 STAGE 1B

STAGE 1C

- A) YPPH
- B) DATE 2330 UTC
- C) DATE 0730 UTC
- E) RWY 03/21 NOT AVBL EXC FOR TWY CROSSING AND DECLARED EMERG ON 30MIN PN TO ATC
TWY A SOUTH OF A9 NOT AVBL, TWY A6, A7 AND A11 NOT AVBL, TWY C SOUTH OF C9 NOT AVBL,
TWY C6 AND C11 NOT AVBL, TWY P NOT AVBL, TWY D BTN RWY 03/21 AND TWY A NOT AVBL, TWY
N NOT AVBL
REF MOWP YPPH 001-22 STAGE 1C

STAGE 1D

- A) YPPH
- B) DATE 2330 UTC
- C) DATE 0730 UTC
- E) RWY 03/21 NOT AVBL EXC FOR TWY CROSSING AND DECLARED EMERG ON 30MIN PN TO ATC
TWY A SOUTH OF A9 NOT AVBL, TWY A6, A7 AND A11 NOT AVBL, TWY C SOUTH OF C9 NOT AVBL,
TWY C6 AND C11 NOT AVBL, TWY P NOT AVBL, TWY W BTN TWY B AND TWY C NOT AVBL
REF MOWP YPPH 001-22 STAGE 1D

STAGE 2A

- A) YPPH
- B) DATE 2330 UTC
- C) DATE 0730 UTC
- E) RWY 06/24 NOT AVBL EXC FOR TWY CROSSING AND DECLARED EMERG ON 30MIN PN TO ATC
TWY V NOT AVBL, TWY W BTN TWY C AND RWY 06/24 NOT AVBL
REF MOWP YPPH 001-22 STAGE 2A

STAGE 2B

- A) YPPH
- B) DATE 2330 UTC
- C) DATE 0730 UTC
- E) RWY 06/24 NOT AVBL EXC FOR TWY CROSSING AND DECLARED EMERG ON 30MIN PN TO ATC
TWY A BTN TWY D AND TWY V NOT AVBL, TWY J1 NOT AVBL,
TWY W BTN TWY C AND RWY 06/24 NOT AVBL
REF MOWP YPPH 001-22 STAGE 2B

3.3 Aircraft Emergencies

The runway will be made available for declared emergencies; however, the Runway status will be subject to the time given to make good the works if the arrival is within the 30 minutes' notice period. Any works not completed will be advised to ATC along with advice on the unserviceability for provision to the pilot subject to the emergency.

3.4 Airport Emergencies

If an incident should occur at Perth Airport and emergency procedures are activated as detailed in the Perth Airport Aerodrome Emergency Plan, based on the size and scale of the incident, works may be suspended or ceased for that shift.

The Airfield Duty Manager is responsible for communicating suspensions or cessations to the works party during an emergency.

3.4.1 Aviation Rescue & Fire Fighting (ARFFS)

ARFF vehicles will be permitted to cross the closed runway if required.

ARFF should, as a first resort, request routing from ATC that avoids active works areas.

When responding to an incident near an active work site **ARFF vehicles shall be limited to a maximum speed of 40km/h.**

3.5 Adverse Weather & Low Visibility Operations

Adverse weather such as very heavy showers, storms or fog may result in a cancelled works shift. Perth Airport will review forecasts and consult with ATC to determine if the weather forecast is not suitable for works to commence.

Should adverse weather such as very heavy showers, storms or fog generate after works have begun, Perth Airport will consult with ATC to determine if the weather event requires a suspension or cancellation of the works.

During declared Low Visibility Operations all works shall be ceased and may require the return of Rwy 03/21 to operational status.

3.6 Instrument Landing Systems and Training Flights

The works will have the following effect on ILS:

- The ILS (for the closed runway) will be turned off. For AirServices Australia (ASA) periodic ILS testing, the ILS may remain on for the initial hour to complete that testing prior to being turned off for the remainder of the closure.

Training approach flights will be permitted to the closed runway under the following conditions:

- No asymmetric approaches permitted,
- Aircraft will not be permitted to descend below the higher of the minima or 300ft AGL,
- Aircraft must not over fly the runway below:
 - 500ft AGL, if it is 7000kg MTOW or less; or
 - 1000ft AGL
- Training approach flights may cross the closed runway following an approach to the duty runway.

ASA are responsible for publishing and maintaining all NOTAMs related to:

- The availability of Instrument Landing Systems
- Any changes to approach procedures or minima (including training approaches)

SECTION 4 PERSONNEL AND EQUIPMENT

The following restrictions apply to personnel and equipment undertaking the works. Regarding aircraft safety and airport security, this MOWP will take precedence over other contract documents that may be in place for any person to carry out works at the Airport.

All personnel associated with the work shall be bound by the instructions issued by the primary Works Safety Officer (WSO). All Works teams must include a nominated WSO who will maintain contact with the primary WSO. Works will be confined to the areas shown on the drawings.

4.1 Works Access Routes

Access to the closed runway will be via the nominated access routes and runway holding positions as detailed in attached drawings, FS-10199 Sheet 1 to FS-10199 Sheet 6. The WSO will request ATC to deselect the stop bars at the nominated runway holding positions for the duration of the works.

Access via nominated runway holding position

- Runway holding position within area marked with unserviceability markers
- Stop bar deselected (OFF)
- Requires approval from WSO to enter the Runway

Access via any other Taxiway

- Taxiway operational
- Stop bar active (ON)
- Contact ATC to request the stop bar to be lowered (ATC will advise “stop bar down” only).
- You MUST still receive clearance from the WSO to enter the runway AND have the stop bar turned off by ATC
- ATC lowering the stop bar does not constitute a clearance to operate in any works area, which must be granted by the WSO.

The works teams will observe any markers and remain within the defined area as detailed in the stage drawings.

No movement of vehicles or plant may occur outside the defined work areas without the prior approval of the Works Safety Officer. Vehicles must be Perth Airport approved for use airside and driven by those with the appropriate airside licence. Any other vehicle must have an escort to travel within the aircraft movement area or as directed by the Works Safety Officer.

Stage	Works Restriction
All Stages	Works team shall access the runway only via the nominated taxiways Give way to all acft crossing at active taxiways

4.2 Pull Back / Recall

No stages are planned with specific pull back areas. However, should works teams or contractors require access to the runways intersection, the work and the recall required, must be identified during weekly planning for inclusion in the activity schedule. For PAPL works teams (being nominated WSOs in the Aerodrome Manual and holding Cat 4 ADAs), may liaise directly with ATC for this access, the recall time shall be as per the activity schedule. Contractors must be under the supervision of a nominated WSO that holds a Cat 4 ADA.

4.3 VCA Access

Vehicle Critical Areas (VCA) are protected areas around air navigation equipment. Works with vehicles and anything but hand tools will not take place in any VCA of active runways. Works with hand tools only may be completed whilst the ILS are radiating, within the VCA under certain conditions.

The ILS for the closed runway will be turned off (except for ASA periodic ILS testing) however the associated VCA still requires clearance to enter. Entry to a VCA will be via a specific instruction from ATC to the WSO. A clearance to enter the runway is not a clearance to enter the VCA.

4.4 Foreign Object Debris

Foreign Object Debris (FOD) is any item (from small stones to equipment) on the manoeuvring area that is not intended to be there. FOD is a significant hazard to aircraft operations.

The works teams and contractors must leave the works area in an acceptable operational condition to the full satisfaction of the WSO prior to the completion of the work period. This is an essential safety requirement which must be achieved within the prescribed time periods for each stage to ensure minimal disruption to airfield operations.

The works teams and contractors shall be responsible for the cleanliness of the work areas together with its access routes for the duration of the works. All loose material and equipment must be secured against movement in strong wind or by aircraft jet blast. The occurrence of dust, debris and loose foreign materials is to be minimised to the satisfaction of the WSO. The works teams shall employ continuous approved methods of dust suppression and debris removal throughout the duration of the works and at other times when directed by the WSO.

Vehicles transporting materials to or from the site shall, prior to movement, be cleaned in all areas where materials may lodge including body rails, wheels, wheel arches, tailgates and rear fittings to the full satisfaction of the WSO.

Where the works team is required to use a sweeper, it must not be fitted with steel wire brushes, but shall be fitted with non-metallic brushes of nylon or other approved material. It shall be operated by a dedicated and experienced responsible person.

4.5 Jet Blast

Jet Blast is the exhaust (thrust) from aircraft engines which, for a Boeing 777, can reach a velocity of 400kph.

Works sites have been assessed for potential exposure to jet blast.

Stage	Jet Blast
All	All stages have some potential for jet blast with aircraft departing or arriving on the crossing runway

On all works sites, jet blast remains a constant hazard at Perth Airport and all works personnel should use caution when working close to operational runways and taxiways or behind aircraft.

Light materials, tools and equipment must be secured always when not in use (or where possible, when in use) if there is a risk of exposure to jet blast.

4.6 Vehicle/Equipment Condition

All vehicles and plant shall be in full working condition to ensure full mobility around the work areas as required. Unserviceable or mechanically unsound vehicles and plant shall be removed from the work area as directed by the WSO and shall be replaced by fully serviceable plant.

All vehicles and plant must have a flashing amber beacon.

4.7 Height Restrictions

Obstacle Limitation Surfaces (OLS) are a series of surfaces that set the height limits of objects, in and around an aerodrome. All works will take place on the closed runway and will not be permitted to penetrate the OLS surfaces of the active cross runway unless previously approved in writing via the Perth Airport – Protected Airspace Assessment Tool (PAAT) <https://paat.perthairport.com.au>.

4.8 Security and Emergency

All personnel entering the work site must display either a current ASIC or a Visitor Identification Card. These cards or passes must be displayed always. Contractor's Superintendents will be responsible for the employees, sub-contractors and personnel under their control.

The Works Safety Officer may refuse access to persons who in their opinion are likely to present a safety risk to airfield operations.

Communicating Incidents to Perth Airport

The works teams and contractors are responsible for ensuring that Emergency Incidents are reported to **Perth Airport ACC on 9478 8500**. This includes fires or hazards. Upon notification to ACC the WSO supervising the works site must be notified.

All life-threatening incidents must be reported to Emergency Services on 000.

4.9 Works Safety Officers

The WSO for these works will be a Perth Airport WSO, overseen by the Airfield Duty Manager.

4.9.1 Airfield Duty Manager's Responsibilities

The Airfield Duty Manager's responsibilities include, but are not limited to the following;

- Delivering the runway works briefing as per the notes in the weekly Activity Schedule;
- Ensure the safety of aircraft operations in accordance with the standards for aerodrome works and this MOWP;
- Ensure the aerodrome works are notified by issue of a NOTAM and that the text of each NOTAM is as set out in this MOWP;
- Supply the ATC Shift Manager, with whatever information is necessary to ensure the safety of aircraft operations;
- Ensure that the movement area is safe for normal aircraft operations following removal of vehicles, plant, equipment, personnel and FOD from the works area;

4.9.2 Works Safety Officer's Responsibilities

The Works Safety Officer's responsibilities include, but are not limited to the following;

- Attend the runway works briefing.
- Ensure the safety of aircraft operations in accordance with the standards for aerodrome works and this MOWP;
- Check, daily, that the text of any NOTAM associated with the works is exactly as set out in this MOWP or its amendments;
- Complete the AST03 – WSO Site Inspection Checklist once per stage.
- Supply the ATC Shift Manager, as required, with whatever information is necessary to ensure the safety of aircraft operations;
- Liaise with ASA Tech Services prior to closure to confirm ILS is off;
- Discuss with the works organisation, daily, any matters necessary to ensure the safety of aircraft operations;
- Ensure the works area are correctly marked and lit in accordance with MOS Part 139 and this MOWP;
- Ensure that the vehicles, plant and equipment carrying out aerodrome works are properly marked and lit or are under works safety officer supervision or within properly marked and lit works area;
- Ensure that all other requirements of the directions and MOWP relating to vehicles, plant, equipment and materials are complied with;
- Ensure that access routes to work areas are in accordance with this MOWP and clearly identified and that access is restricted to these routes;
- Report immediately to the air-traffic controller and the ADM any incident, or damage to facilities, likely to affect air-traffic control services or the safety of aircraft;
- Remain on duty at the works area while workers are on site and the aerodrome is open to aircraft operations;
- Ensure that ATC is kept informed of the radio call sign of the vehicle used by the works safety officer;
- Require the immediate removal of vehicles, plant and personnel from the movement area where necessary to ensure the safety of aircraft operations;
- Ensure that the movement area is safe for normal aircraft operations following removal of vehicles, plant, equipment, personnel and FOD from the works area;
- In the case of time-limited works, ensure that the works area is restored to normal safety standards within the nominated recall time.

SECTION 5 AERODROME MARKERS, MARKINGS AND LIGHTS

5.1 Markers

5.1.1 Unserviceability Markers

Due to the nature of the work, being time limited in nature, white runway closure markers will not be used however lighted visual aids will be deployed. Night works are not part of this MOWP.

The WSO shall ensure unserviceability markers and lighted visual aids are positioned in accordance with drawings FS-10199 sheets 1 - 6.

Works Safety Officers may, at their discretion, reduce the works area. However, doing so must not cause any further restrictions to aircraft operations than those detailed within this MOWP.

The WSO is to ensure markers are collected prior to reopening the runway.

5.1.2 Works Limit Markers

Unserviceability markers are used to define the work areas closed to aircraft operations. The use of works limit lines will be dependent on the planned works and will be at the discretion of the WSO and ADM. Pull back areas are not included in this MOWP.

5.2 Markings

No markings will be removed, altered or added during the planned works.

5.3 Lights

5.3.1 Taxiway and runway lights

There will be no impact to aerodrome lighting during these works. All works will be conducted during daylight hours.

5.3.2 Stopbars

Stop bars will be active at all runway holding points with the exception of the nominated access routes as detailed in attached drawings, FS-10199. As each nominated taxiway is within the area closed to aircraft operations, the WSO is to request that ATC disable the stop bar. At completion of the works, the WSO will request ATC enable the stop bar prior to removing the unserviceability markers.

5.4 Protection of electrical services

Perth Airport Pty Ltd has an Excavation Permit Procedure (EPP) which ensures pre-planning is undertaken to manage all risks associated with excavation and it is critical that the EPP is followed prior to any excavation proceeding. The EPP includes specific more extensive pre-planning procedures for High Risk Excavation.

SECTION 6 ADMINISTRATION

6.1 Works Organisation

Perth Airport maintenance teams and contracted project teams will undertake the works.

6.1.1 Perth Airport Operations Teams

The Works Teams Manager or Supervisor is the Site Representative. The Works Manager shall remain responsible on behalf of the works team for complying with the requirements of this MOWP. Contact details of the Works Manager are;

Airfield Works Manager Matthew Briggs +61 8 9478 8442 Matthew.Briggs@perthairport.com.au
Electrical Supervisor Geo Velasquez +61 8 6278 8360 Geovanni.Velasquez@perthairport.com.au

6.2 MOWP Development and Execution

The Airfield Operations Team are responsible for the development and execution of the MOWP. Questions related to the MOWP or execution of works may be directed to;

Airfield Safety & Operations Manager: (Responsible for day to day operations and development of this MOWP) Darren McKenzie (08) 9478 8441 darren.mckenzie@perthairport.com.au
After Hours: Airfield Duty Manager (08) 9478 8424 0419 195 790
General Manager Operations: (Overall responsibility for airport operations.) Tony Sewell (08) 9478 8879 tony.sewell@perthairport.com.au

SECTION 7 AUTHORITY


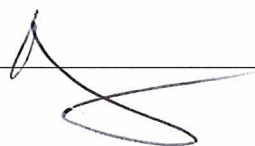
All works will be carried out in accordance with the MOWP.

7.1 Expiry of the MOWP

This MOWP will remain current until 31st December 2022 unless extended by amendment or replaced by a new MOWP for 2023.


7.2 Agreement

The following signatories recognise the provisions and restrictions in this MOWP and agree to execute the works in accordance to those provisions and restrictions.

Airfield Maintenance Manager Matthew Briggs	Sign 	Date 20/12/2021
Electrical Infrastructure Manager Mark Dawson	Sign 	Date 20/12/2021

7.3 Approval

Under the authority of the Perth Airport General Manager Operations MOWP YPPH 001-22 is approved for release.

General Manager Operations Tony Sewell Perth Airport Pty Ltd	Sign 	Date 20 DEC 21
--	---	-------------------

SECTION 8 DRAWINGS

The drawings associated with MOWP YPPH 001-21 are attached as FS-10199 Sheet 1 to FS-10199 Sheet 6.

Stage 1A Detail	FS-10199 Sheet 1
Stage 1B Detail	FS-10199 Sheet 2
Stage 1C Detail	FS-10199 Sheet 3
Stage 1D Detail	FS-10199 Sheet 4
Stage 2A Detail	FS-10199 Sheet 5
Stage 2B Detail	FS-10199 Sheet 6

SECTION 9 DISTRIBUTION LIST

This MOWP will be distributed to those organisations and agencies listed below.

Aeroadapt	Remorex Pty Ltd
Air Asia	Royal Aero Club of Western Australia
Air BP	Royal Flying Doctor Service
Air Mauritius	Scoot Airlines
Air New Zealand	Singapore Air Cargo
Air North	Singapore Airlines
Airflite	Skippers Aviation
Airport Coordination Australia	South African Airways
Airservices Australia	Star Aviation
All Nippon Airlines	Swissport
Alliance Airlines	Thai Airways
Auswest Airlines	Toll Priority
Aviation Performance Systems Pty Ltd	Virgin Australia Airlines
AvWest	Viva Energy
Awesome Aviation	West Coast Civil
Cathay Pacific Airways	
Central Air	
China Southern Airlines	
China Southern WA Flying Collage	
Citilink	
Civil Aviation Safety Authority	
Cobham Aviation	
Densford Civil	
Dnata Airport Services	
Emirates Airlines	
Foodfolk Australia	
Garuda Indonesia	
Hawker Pacific	
Heston MRO	
Jeppesen	
Jet Aviation	
Jetstar	
Malaysia Airlines	
Malindo Air	
Maroomba Airlines	
Maxem Aviation	
Menzies Aviation	
Network Aviation	
Perth Airport Pty Ltd	
Perth Flight Centre	
Philippine Airlines	
Qantas Airways	
Qatar Airways	
RAAF Base Pearce	
Regional Express	

SECTION 10 REVISION HISTORY

Version	Date	Chapter Paragraph	Details	Author	Approved by

APPENDIX 1 MOWP YPPH 001-22 WORKS SCHEDULE 2022

Closed Runway	Date	Notes
RWY 03-21	Friday, 7 January 2022	ILS OFF
RWY 06-24	Friday, 14 January 2022	ILS OFF
RWY 03-21	Friday, 21 January 2022	ILS OFF
RWY 03-21	Friday, 28 January 2022	ILS OFF
RWY 06-24	Friday, 4 February 2022	ILS OFF
RWY 03-21	Friday, 11 February 2022	ILS OFF
RWY 03-21	Friday, 18 February 2022	ILS OFF
RWY 06-24	Friday, 25 February 2022	ILS OFF
RWY 03-21	Friday, 4 March 2022	ILS OFF
RWY 03-21	Friday, 11 March 2022	ILS OFF
RWY 06-24	Friday, 18 March 2022	ILS OFF
RWY 03-21	Friday, 25 March 2022	ILS OFF
RWY 03-21	Friday, 1 April 2022	ILS OFF
RWY 06-24	Friday, 8 April 2022	ILS OFF
No Works (Good Friday)	Friday, 15 April 2022	N/A
RWY 03-21	Friday, 22 April 2022	ILS OFF
RWY 06-24	Friday, 29 April 2022	ILS OFF
RWY 03-21	Friday, 6 May 2022	ILS OFF
RWY 03-21	Friday, 13 May 2022	ILS OFF
RWY 06-24	Friday, 20 May 2022	ILS OFF
RWY 03-21	Friday, 27 May 2022	ILS OFF
RWY 03-21	Friday, 3 June 2022	ILS OFF
RWY 06-24	Friday, 10 June 2022	ILS OFF
RWY 03-21	Friday, 17 June 2022	ILS OFF
RWY 03-21	Friday, 24 June 2022	ILS OFF
RWY 06-24	Friday, 1 July 2022	ILS OFF
RWY 03-21	Friday, 8 July 2022	ILS OFF
RWY 03-21	Friday, 15 July 2022	ILS OFF
RWY 06-24	Friday, 22 July 2022	ILS OFF
RWY 03-21	Friday, 29 July 2022	ILS OFF
RWY 03-21	Friday, 5 August 2022	ILS OFF
RWY 06-24	Friday, 12 August 2022	ILS OFF
RWY 03-21	Friday, 19 August 2022	ILS OFF
RWY 03-21	Friday, 26 August 2022	ILS OFF
RWY 06-24	Friday, 2 September 2022	ILS OFF
RWY 03-21	Friday, 9 September 2022	ILS OFF
RWY 03-21	Friday, 16 September 2022	ILS OFF
RWY 06-24	Friday, 23 September 2022	ILS OFF
RWY 03-21	Friday, 30 September 2022	ILS OFF
RWY 03-21	Friday, 7 October 2022	ILS OFF
RWY 06-24	Friday, 14 October 2022	ILS OFF
RWY 03-21	Friday, 21 October 2022	ILS OFF
RWY 03-21	Friday, 28 October 2022	ILS OFF
RWY 06-24	Friday, 4 November 2022	ILS OFF
RWY 03-21	Friday, 11 November 2022	ILS OFF
RWY 03-21	Friday, 18 November 2022	ILS OFF
RWY 06-24	Friday, 25 November 2022	ILS OFF
RWY 03-21	Friday, 2 December 2022	ILS OFF
RWY 03-21	Friday, 9 December 2022	ILS OFF
RWY 06-24	Friday, 16 December 2022	ILS OFF
RWY 03-21	Friday, 23 December 2022	ILS OFF



Nominated works access

A9 stopbar extinguished

C9 stopbar extinguished

D stopbar extinguished

N stopbar extinguished

75.0

51

43.5

	Works limit cones		Time Limited works area
	Unserviceability cones		Area closed to all operations
	Runway closure marks		
	Temporary EGR positions		
	ATC Taxi / Tow routes		
	Vehicle access route		

NOTE:

1. 7 x Red and White unserviceability markers to be placed at runway intersection at 3m intervals
2. 5 x Red and White unserviceability markers to be placed at all other locations at 3m intervals
3. Work limit markers to be placed at runway intersection

ISS	DRN	AMENDMENTS	APPD	DATE
0	SE	Original Issue	DM	14.12.21

CAUTION : ANY PERSON INTENDING TO USE ANY INFORMATION IN THIS DRAWING MUST READ THIS NOTICE

This drawing has been prepared for the sole use of Perth Airport Pty Ltd (Perth Airport). Any person intending to rely on any information contained in this drawing must independently verify that information by conducting appropriate physical measurements or surveys on the site in question. In particular, all services should be physically located and before any building activity is commenced on Perth Airport land, a permit must be obtained from the Perth Airport Building Controller. Copyright in this drawing is owned by Perth Airport. Reproduction in any form is prohibited without the prior permission in writing of Perth Airport.

MOWP 001-22
STAGE 1A

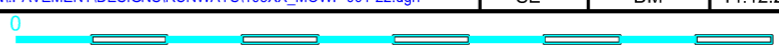
WORKS ACCESS TWY A9, C9, D & N

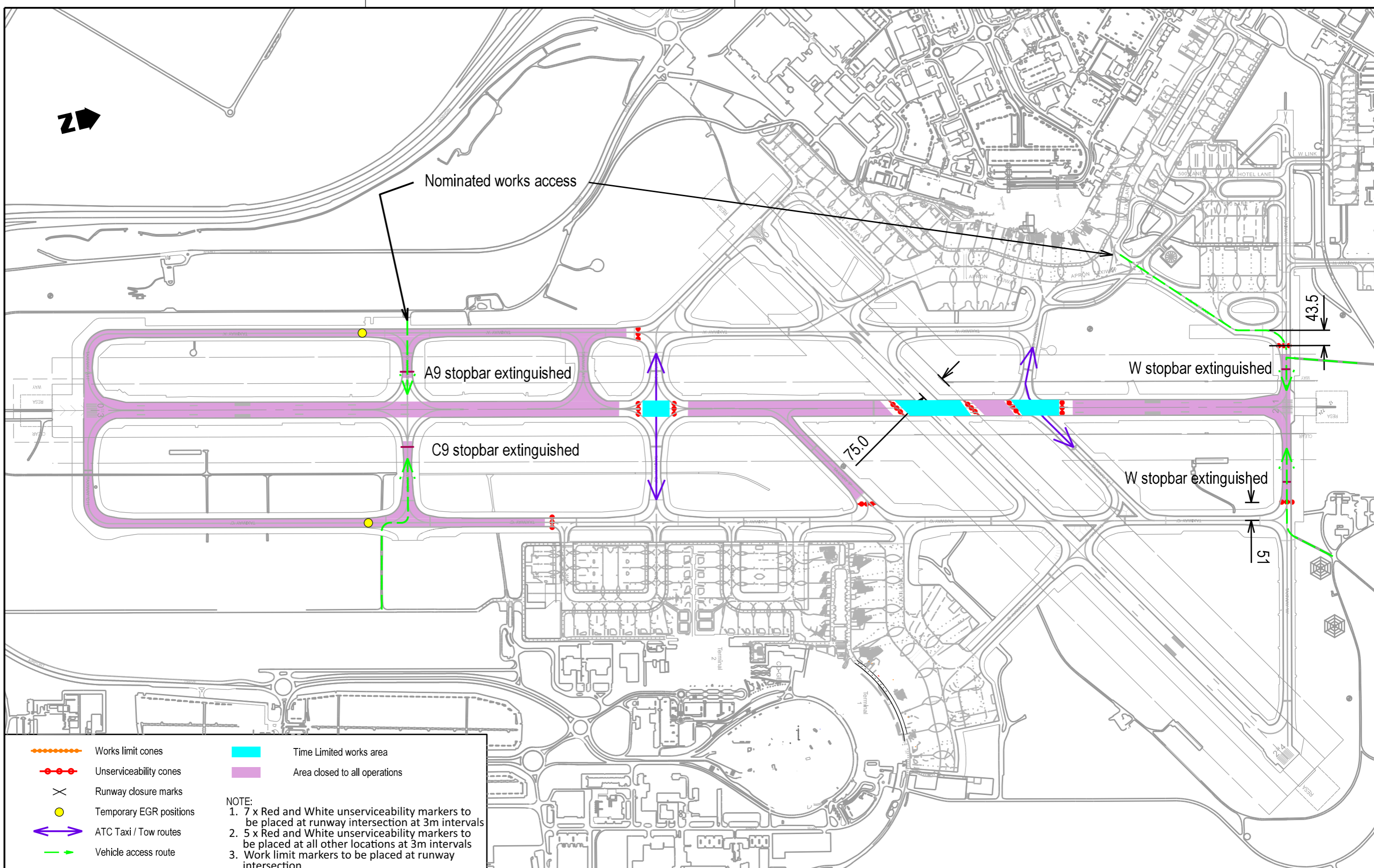
MICROSTATION FILE :
N:\PAVEMENT\DESIGNS\RUNWAYS\105XX_MOWP 001-22.dgn

DRAWN SE	APPROVED DM	DATE 14.12.21
-------------	----------------	------------------

SIZE A3	DRAWING No. FS-10199
SCALE 1:10000	SHEET 1

Perth Airport





ISS	DRN	AMENDMENTS	APPD	DATE
0	NNN	Amendment	NN	dd.mm.yy

CAUTION : ANY PERSON INTENDING TO USE ANY INFORMATION IN THIS DRAWING MUST READ THIS NOTICE

This drawing has been prepared for the sole use of Perth Airport Pty Ltd (Perth Airport). Any person intending to rely on any information contained in this drawing must independently verify that information by conducting appropriate physical measurements or surveys on the site in question. In particular, all services should be physically located and before any building activity is commenced on Perth Airport land, a permit must be obtained from the Perth Airport Building Controller. Copyright in this drawing is owned by Perth Airport. Reproduction in any form is prohibited without the prior permission in writing of Perth Airport.

**MOWP 001-22
STAGE 1B**

WORKS ACCESS TWY A9, C9 & W

MICROSTATION FILE :
N:\PAVEMENT\DESIGNS\RUNWAYS\105XX_MOWP 001-22.dgn

DRAWN SE	APPROVED DM	DATE 14.12.21
-------------	----------------	------------------

SIZE A3	DRAWING No. FS-10199
SCALE 1:10000	SHEET 2

Perth Airport



Nominated works access

A6 stopbar extinguished

D stopbar extinguished

C6 stopbar extinguished

N stopbar extinguished

75.0

43.5

	Works limit cones		Time Limited works area
	Unserviceability cones		Area closed to all operations
	Runway closure marks		
	Temporary EGR positions		
	ATC Taxi / Tow routes		
	Vehicle access route		

NOTE:

- 7 x Red and White unserviceability markers to be placed at runway intersection at 3m intervals
- 5 x Red and White unserviceability markers to be placed at all other locations at 3m intervals
- Work limit markers to be placed at runway intersection

ISS	DRN	AMENDMENTS	APPD	DATE
0	NNN	Amendment	NN	dd.mm.yy

CAUTION : ANY PERSON INTENDING TO USE ANY INFORMATION IN THIS DRAWING MUST READ THIS NOTICE

This drawing has been prepared for the sole use of Perth Airport Pty Ltd (Perth Airport). Any person intending to rely on any information contained in this drawing must independently verify that information by conducting appropriate physical measurements or surveys on the site in question.

In particular, all services should be physically located and before any building activity is commenced on Perth Airport land, a permit must be obtained from the Perth Airport Building Controller.

Copyright in this drawing is owned by Perth Airport.

Reproduction in any form is prohibited without the prior permission in writing of Perth Airport.

MOWP 001-22
STAGE 1C

WORKS ACCESS TWY A6, C6 ,D & N

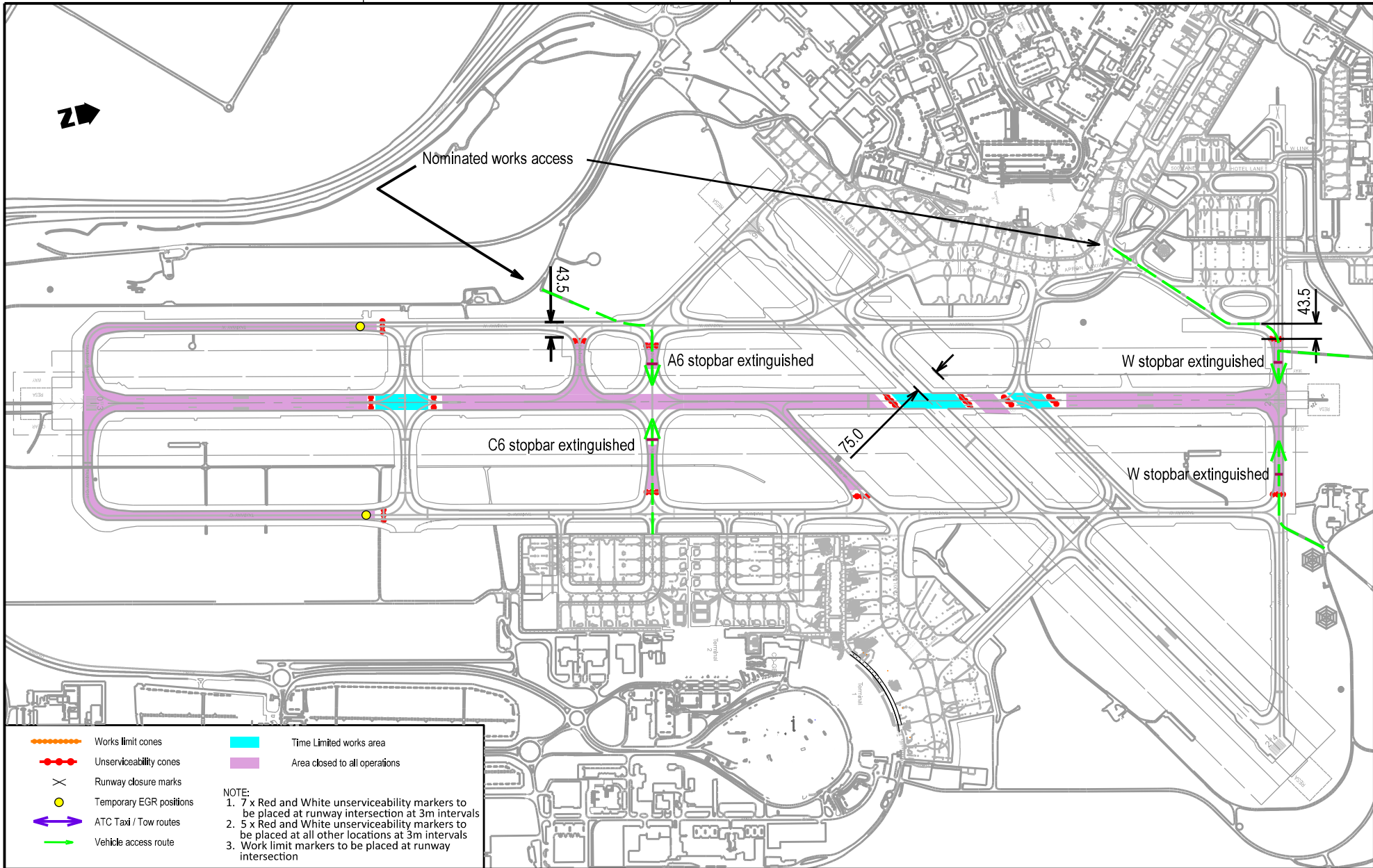
MICROSTATION FILE :
N:\PAVEMENT\DESIGNS\RUNWAYS\105XX_MOWP 001-22.dgn

DRAWN SE	APPROVED DM	DATE 14.12.21
-------------	----------------	------------------

SIZE A3	DRAWING No. FS-10199
SCALE 1: 10000	SHEET 3

Perth Airport





Legend:

- Works limit cones (Orange dashed line)
- Unserviceability cones (Red dashed line)
- Runway closure marks (Black 'X')
- Temporary EGR positions (Yellow circle)
- ATC Taxi / Tow routes (Blue double arrow)
- Vehicle access route (Green arrow)
- Time Limited works area (Cyan shaded area)
- Area closed to all operations (Purple shaded area)

NOTE:

- 7 x Red and White unserviceability markers to be placed at runway intersection at 3m intervals
- 5 x Red and White unserviceability markers to be placed at all other locations at 3m intervals
- Work limit markers to be placed at runway intersection

ISS	DRN	AMENDMENTS	APPD	DATE
0	NNN	Amendment	NN	dd.mm.yy

CAUTION: ANY PERSON INTENDING TO USE ANY INFORMATION IN THIS DRAWING MUST READ THIS NOTICE

This drawing has been prepared for the sole use of Perth Airport Pty Ltd (Perth Airport). Any person intending to rely on any information contained in this drawing must independently verify that information by conducting appropriate physical measurements or surveys on the site in question.

In particular, all services should be physically located and before any building activity is commenced on Perth Airport land, a permit must be obtained from the Perth Airport Building Controller.

Copyright in this drawing is owned by Perth Airport. Reproduction in any form is prohibited without the prior permission in writing of Perth Airport.

**MOWP 001-22
STAGE 1D**

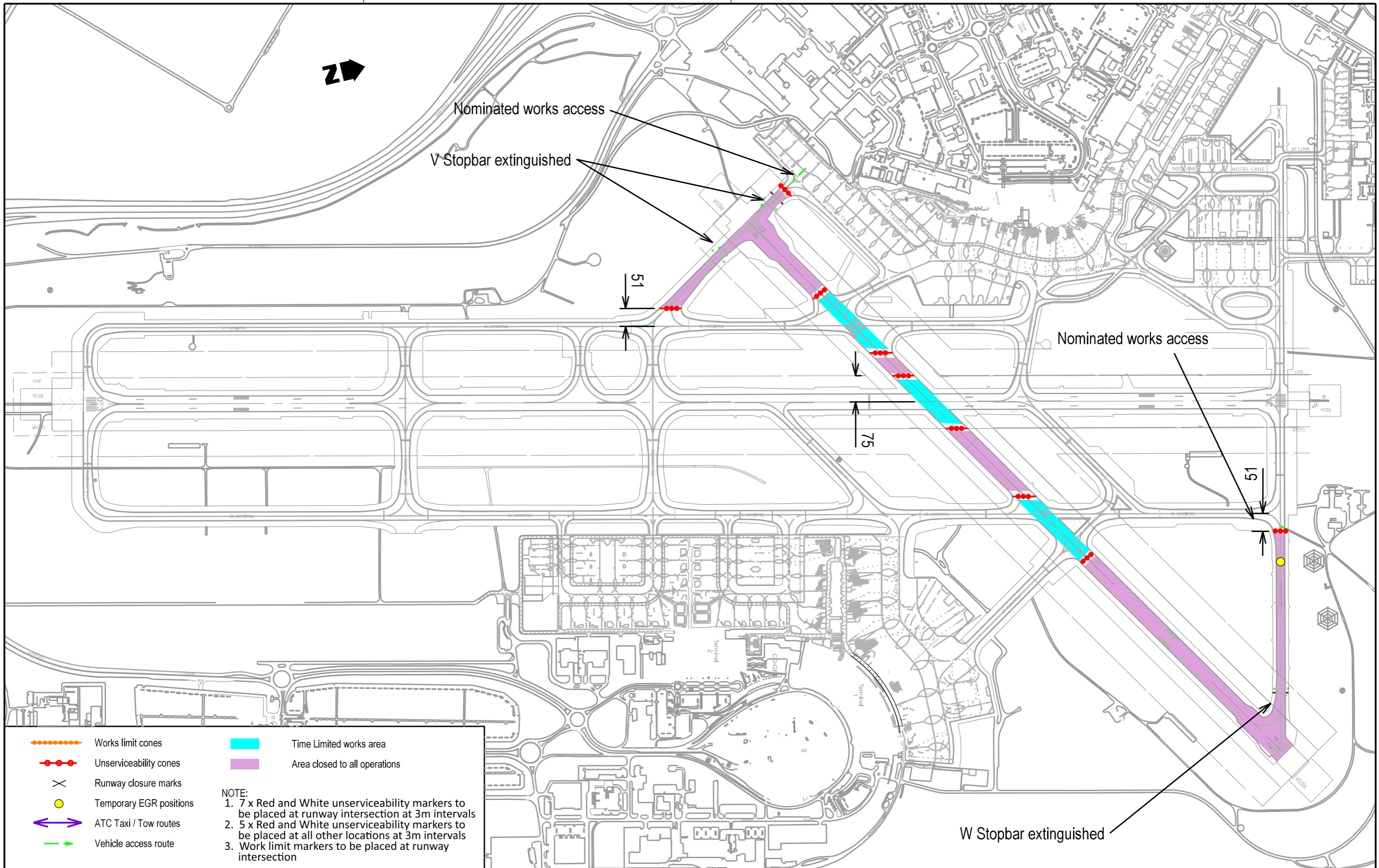
WORKS ACCESS TWY A6, C6 & W

MICROSTATION FILE:
N:\PAVEMENT\DESIGNS\RUNWAYS\105XX_MOWP 001-22.dgn

DRAWN SE	APPROVED DM	DATE 14.12.21
--------------------	-----------------------	-------------------------

SIZE A3	DRAWING No. FS-10199
SCALE 1:10000	SHEET 4

Perth Airport



	Works limit cones		Time Limited works area
	Unserviceability cones		Area closed to all operations
	Runway closure marks		
	Temporary EGR positions		
	ATC Taxi / Tow routes		
	Vehicle access route		

NOTE:

- 7 x Red and White unserviceability markers to be placed at runway intersection at 3m intervals
- 5 x Red and White unserviceability markers to be placed at all other locations at 3m intervals
- Work limit markers to be placed at runway intersection

ISS	DRN	AMENDMENTS	APPD	DATE
0	NNN	Amendment	NN	dd.mm.yy

CAUTION : ANY PERSON INTENDING TO USE ANY INFORMATION IN THIS DRAWING MUST READ THIS NOTICE

This drawing has been prepared for the sole use of Perth Airport Pty Ltd (Perth Airport). Any person intending to rely on any information contained in this drawing must independently verify that information by conducting appropriate physical measurements or surveys on the site in question. In particular, all services should be physically located and before any building activity is commenced on Perth Airport land, a permit must be obtained from the Perth Airport Building Controller. Copyright in this drawing is owned by Perth Airport. Reproduction in any form is prohibited without the prior permission in writing of Perth Airport.

MOWP 001-22
STAGE 2A

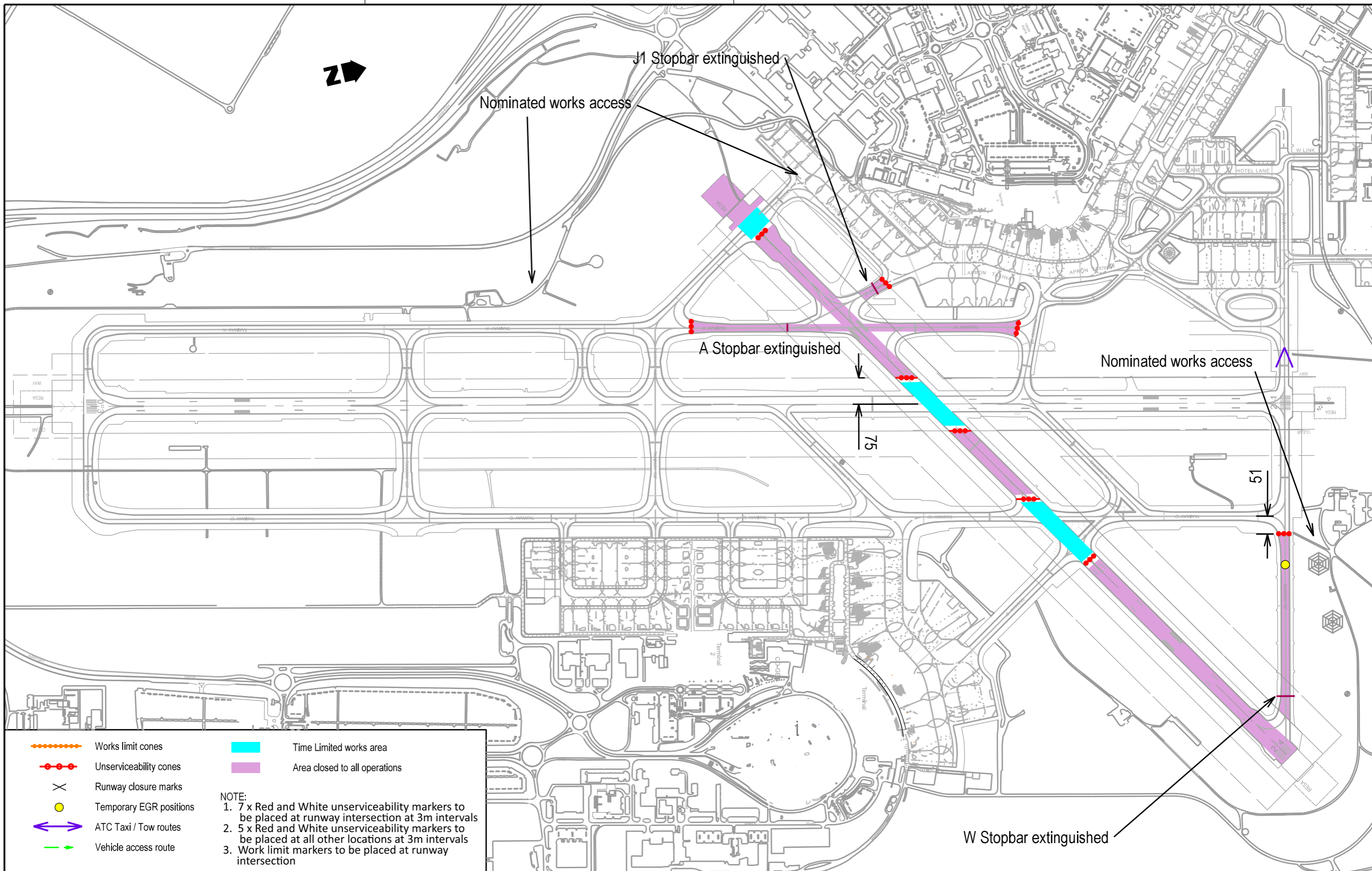
WORKS ACCESS TWY V & W

MICROSTATION FILE :
N:\PAVEMENT\DESIGNS\RUNWAYS\105XX_MOWP 001-22.dgn

DRAWN SE	APPROVED DM	DATE 14.12.21
-------------	----------------	------------------

SIZE A3	DRAWING No. FS-10199
SCALE 1:10000	SHEET 5

Perth Airport



	Works limit cones		Time Limited works area
	Unserviceability cones		Area closed to all operations
	Runway closure marks		
	Temporary EGR positions		
	ATC Taxi / Tow routes		
	Vehicle access route		

NOTE:

- 7 x Red and White unserviceability markers to be placed at runway intersection at 3m intervals
- 5 x Red and White unserviceability markers to be placed at all other locations at 3m intervals
- Work limit markers to be placed at runway intersection

ISS	DRN	AMENDMENTS	APPD	DATE
0	NNN	Amendment	NN	dd.mm.yy

CAUTION : ANY PERSON INTENDING TO USE ANY INFORMATION IN THIS DRAWING MUST READ THIS NOTICE

This drawing has been prepared for the sole use of Perth Airport Pty Ltd (Perth Airport). Any person intending to rely on any information contained in this drawing must independently verify that information by conducting appropriate physical measurements or surveys on the site in question.

In particular, all services should be physically located and before any building activity is commenced on Perth Airport land, a permit must be obtained from the Perth Airport Building Controller.

Copyright in this drawing is owned by Perth Airport.

Reproduction in any form is prohibited without the prior permission in writing of Perth Airport.

MOWP 001-22
STAGE 2B

WORKS ACCESS TWYS A SOUTH , J & W

MICROSTATION FILE :
N:\PAVEMENT\DESIGNS\RUNWAYS\105XX_MOWP 001-22.dgn

DRAWN SE	APPROVED DM	DATE 14.12.21
-------------	----------------	------------------

SIZE A3	DRAWING No. FS-10199
SCALE 1:10000	SHEET 6

Perth Airport